

GRAND HOTEL

BIRMINGHAM



MEETINGS & EVENTS

Beautifully restored and bursting with “wow factor”, the Grand Ballroom is once again opening its doors to some of Birmingham’s most glamorous occasions.

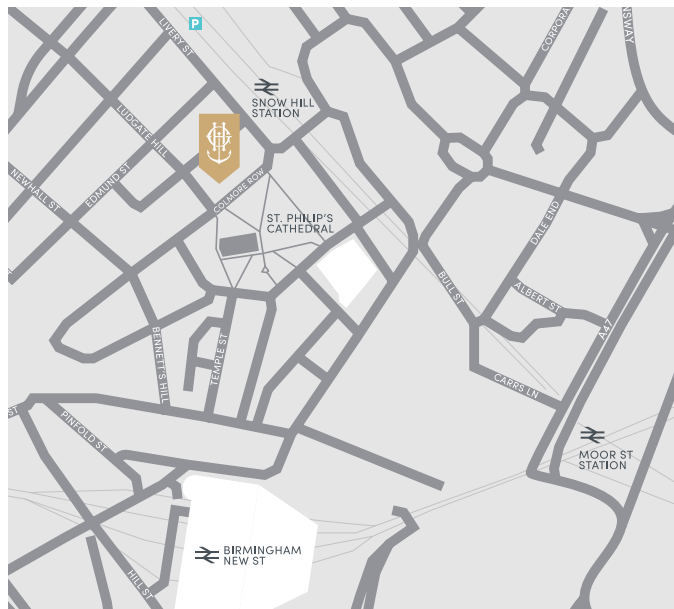
Our nine additional meeting and event spaces combine period character with the latest technology, while our team of chefs can cater to every need, from business breakfast and working lunch to a four-course feast. If you’re looking for a show-stopping event space in a city-centre location, there’s nowhere quite like The Grand Hotel Birmingham.

ROOM NAME	THEATRE	CLASSROOM	CABARET	U-SHAPE	BOARDROOM	DINNER	RECEPTION	DIMENSIONS
GROUND FLOOR								
GRAND BALLROOM	300	176	200	-	-	250	300	28.4 x 11m; h 8.6m
HORTON	-	-	-	-	-	-	50	-
FIRST FLOOR								
BALLROOM BALCONY	-	-	-	-	-	40	-	20 x 3.4m; h 4.4m
CATHEDRAL	48	21	16/8	22	20	36	52	8 x 8m; h 3.5m
COLMORE	68	27	24	24	20	40	68	8.2m x 7m; h 4.6m
CHURCH	117	33	40	35	30	60	107	10.6 x 9m; h 3.2m
REGENT	66	27	28	24	20	40	60	7.6 x 6.8m; h 4.4m
ALBION	-	-	-	-	12	12	-	6.6 x 3.6m; h 4.4m
CHAMBERLAIN	-	-	-	-	12	12	-	6.8 x 3.6m; h 3.3m
TEMPLE	112	48	50	50	44	60	112	15 x 5.8m; h 4.2m
BARWICK	50	27	24	14	14	14	30	8.2 x 6.2m; h 3.6m

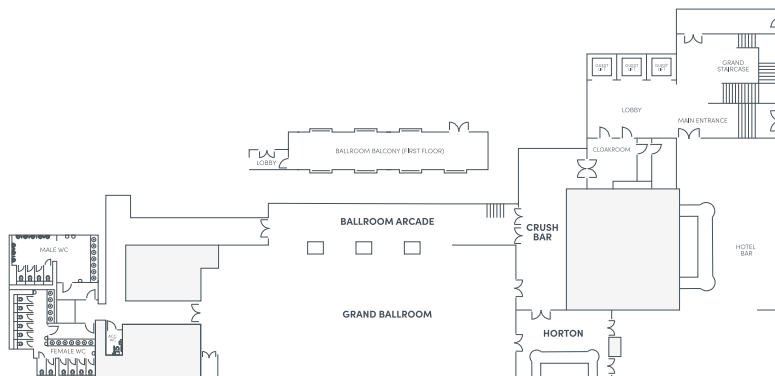


HOW TO FIND US

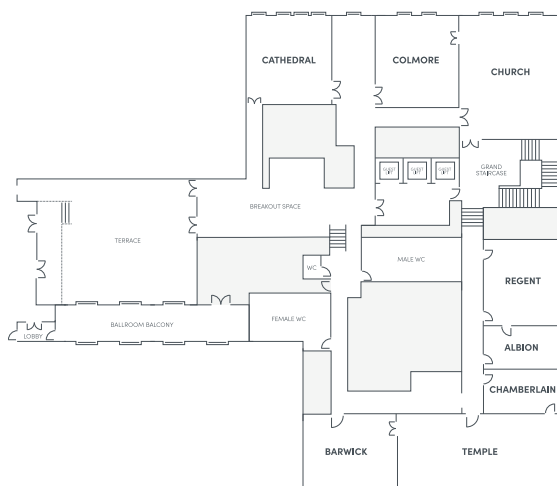
By Air	Birmingham Airport 11 miles
By Rail	Birmingham New Street station 0.3 miles (direct trains to/ from London every 20 mins) Birmingham Snow Hill station 2 minutes
Parking	Snow Hill Station car park 2 minutes (open 6am - 11.30pm; Sunday 8am - 9pm) B4 car park Weaman Street 0.3 miles (open 24 hours)
Post Code	Birmingham B3 2BS



GROUND FLOOR



FIRST FLOOR



IN PARTNERSHIP WITH

