



GRAND HOTEL
BIRMINGHAM

EST  1879

CONTENTS

INTRODUCTION	03
THE GRAND BALLROOM	06
THE FIRST FLOOR	12
BOARDROOMS & MEETINGS	14
PRIVATE DINING & EVENTS	16
THE GARDEN TERRACE	18
BEDROOMS & SUITES	20
EATING & DRINKING	22
CAPACITIES & DIMENSIONS	24
DIRECTORY	25



WELCOME BACK

BIRMINGHAM'S ORIGINAL GRAND
HOTEL RE-OPENED IN WINTER
2020 FOLLOWING A £50 MILLION
RESTORATION AND REFURBISHMENT
AND HAVING BEEN CLOSED FOR
ALMOST 20 YEARS.

The results are dazzling, from the iconic Grand Ballroom and sumptuous public areas to the suite of eight dedicated meeting and event spaces on the first floor.

There is nowhere else quite like The Grand Hotel in Birmingham, whether you are planning an inspiring off-site for the office, a high-profile press launch in the penthouse, or a spectacular event in the Grand Ballroom. From a private dining room for eight people to a cocktail reception for 300, baby showers to proposals of marriage, The Grand Hotel is just the ticket.



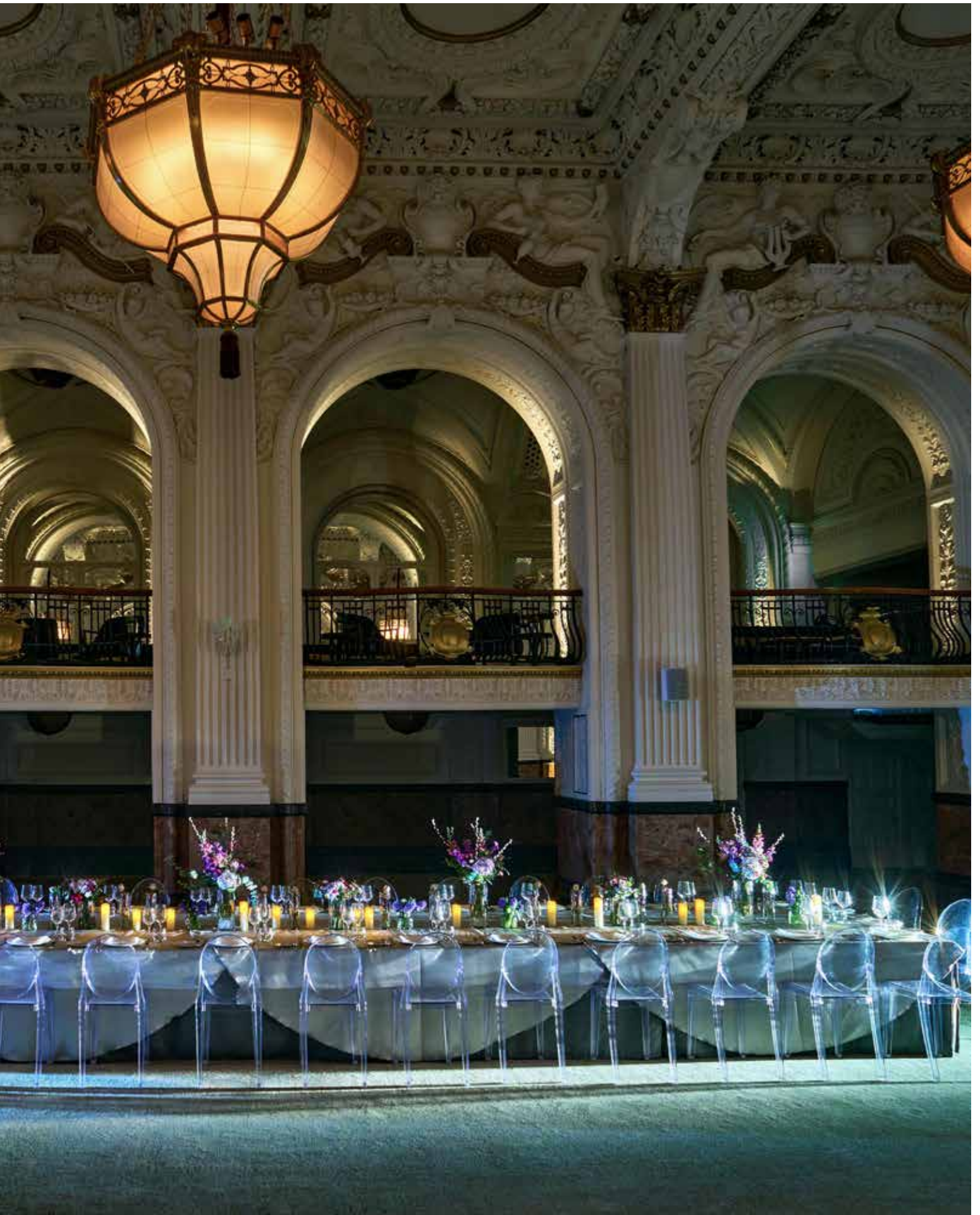


THE GRAND BALLROOM

Built in 1898 and originally known as the Grosvenor Room, the Grand Ballroom is an architectural and engineering masterpiece: almost 30m (100ft) long and 10m (32ft) high, it is decorated with ornate plasterwork, elegant cartouches and original, Art Deco “electroliers” (electric chandeliers).

Entering the ballroom through the impressive mahogany double doors, guests cannot fail to be impressed: for many, their first sight is literally breath-taking. Our dedicated, expert events team will turn your dream wedding or event into reality, creating a day you will never forget.





The Grand Ballroom is sure to impress: a stunning backdrop to weddings, banquets and special occasions.









From product launches to awards nights, parties in the Grand Ballroom are a night to remember.



THE FIRST FLOOR

Dedicated exclusively to meetings and events, the first floor of The Grand Hotel Birmingham consists of eight boardrooms and multi-function rooms; All of them combine original period features with modern technology; and all of them offer natural daylight and a generous sense of space.

Shared breakout spaces are dotted around the first floor. They include a large co-working and "grab & go" station adjacent to the lifts, as well as access to the outdoor terrace.





BOARDROOMS & MEETINGS

Combining original architectural features with brand new, intuitive technology, most of the Grand's flexible meeting rooms can be configured in a number of ways, from traditional boardrooms to U-shape, theatre, classroom and cabaret. All of the rooms offer a 60-inch UHD-TV and ClickShare wireless presentation.

1 Temple boardroom; 2 Colmore U-shape;
3 Church boardroom; 4 Temple classroom;
5 Regent cabaret.







PRIVATE DINING & EVENTS

At The Grand Hotel Birmingham, we can scale from an exclusive private dinner for eight in Albion or Chamberlain to glamorous cocktail reception for 400 in the Grand Ballroom. For those occasions when the Ballroom is just too grand or too big, private rooms such as Temple, Church and Cathedral offer the glamour of The Grand on a more intimate scale.

1 Church; 2 Regent; 3 & 4 Colmore; 5 Temple.





GARDEN TERRACE & BREAKOUT AREAS

There are various breakout spaces across the first floor. Complimentary refreshments are replenished throughout the day, typically between 8am and 5pm (dependent on business levels). For groups wanting use of an exclusive lounge or breakout space, the Barwick room is a perfect choice.

The Garden Terrace can be booked for private events, subject to availability and minimum spends.

1 Breakout breakfast pastries;
2 & 3 Garden Terrace; 4 Barwick.



1



2



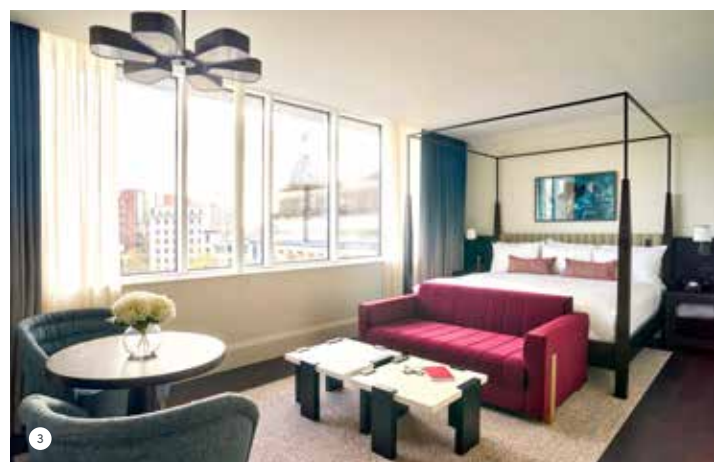


BEDROOMS & SUITES

If you are planning an event or a conference requiring accommodation, look no further than The Grand Hotel Birmingham. The hotel has 185 bedrooms and suites, thoughtfully designed and beautifully appointed.

The duplex Penthouse Suite is the grandest that Birmingham has to offer, and can be booked for cocktail parties, press launches and other swish events for up to 50 guests.

1 Penthouse Suite; 2 Grand Deluxe Twin;
3 Grand Junior Suite; 4 Grand Suite;
5 Grand Double; 6 Grand Junior bathroom;
7 Penthouse Suite living room.





EATING & DRINKING

Private dining and events offer restaurant-quality food of the standard that you will find in Isaac's and Madeleine, but on a larger scale. In the Grand Ballroom, they have served afternoon tea for 150 and created sumptuous, five-course banquets. Up on the first floor, guests have celebrated landmark birthdays with a slap-up dinner, held cocktail networking nights, and made full use of the working lunches served in the breakout space.

Due to the configuration of the hotel kitchens, we regret that The Grand is unable to accommodate outside caterers.

1 Isaac's brunch; 2 Isaac's;
3 Madeleine; 4 Champagne cocktail;
5 Madeleine afternoon tea.





CAPACITIES AND DIMENSIONS

GRAND BALLROOM
28m x 11m (92ft x 36ft)

ALBION & CHAMBERLAIN
6.5m x 3.5m (22ft x 12ft)

BARWICK
8m x 6m (26ft x 20ft)

CATHEDRAL
8m x 8m (26ft x 26ft)

CHURCH
10.5m x 9m (34ft x 30ft)

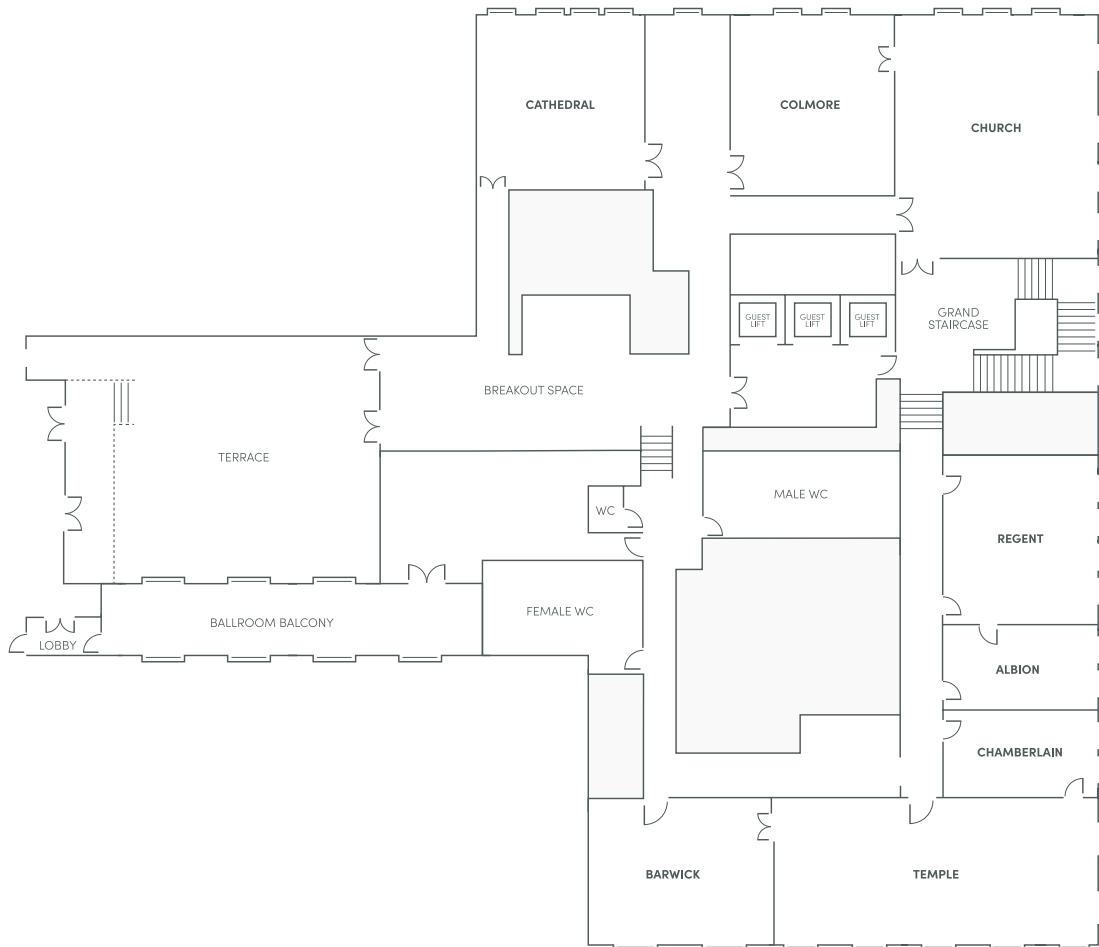
COLMORE
8m x 7m (26ft x 23ft)

REGENT
7.5m x 7m (24ft x 23ft)

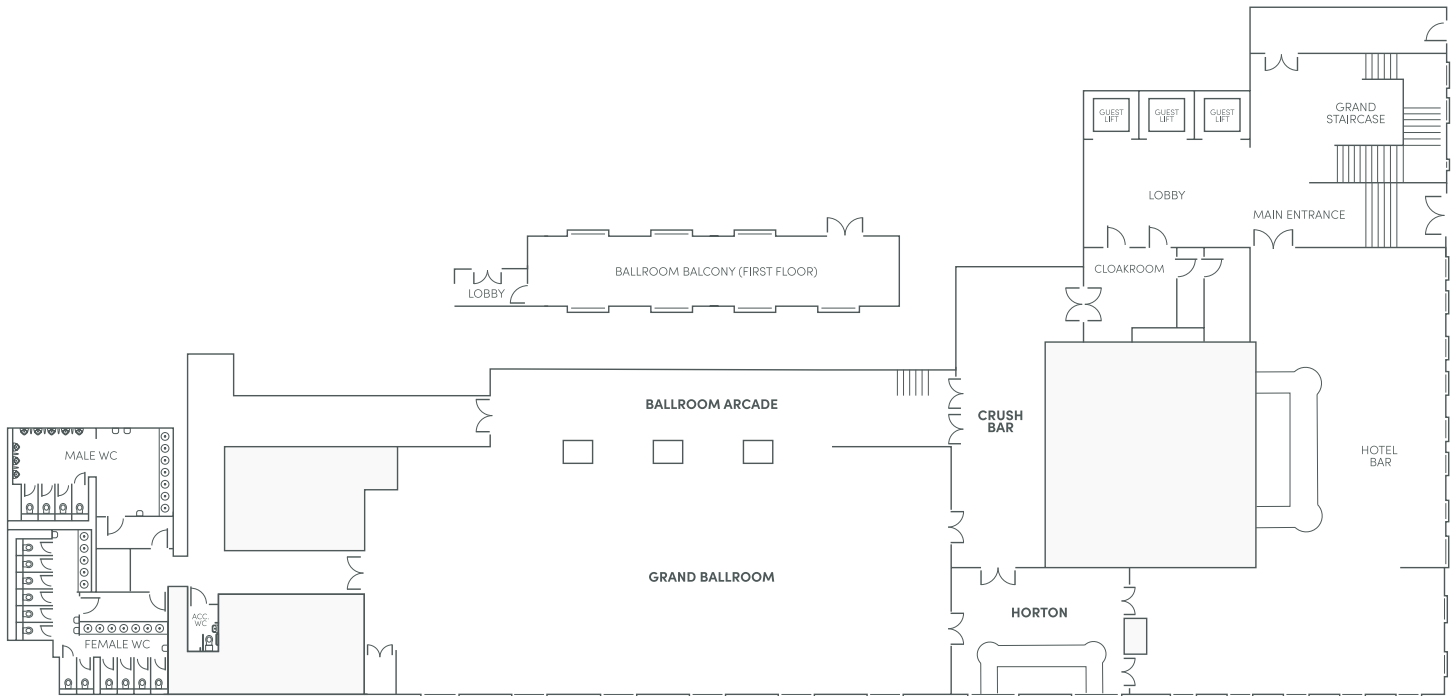
TEMPLE
15m x 6m (50ft x 20ft)

HORTON
00m x 00m (00ft x 00ft)

	Boardroom	Cabaret	Classroom	Theatre	U-Shape	Private Dining	Reception	Banqueting
GRAND BALLROOM 28m x 11m (92ft x 36ft)	-	200	176	500	-	-	50	250
ALBION & CHAMBERLAIN 6.5m x 3.5m (22ft x 12ft)	12	-	-	-	-	12	-	-
BARWICK 8m x 6m (26ft x 20ft)	14	24	27	50	14	14	30	-
CATHEDRAL 8m x 8m (26ft x 26ft)	20	16	21	48	22	36	52	-
CHURCH 10.5m x 9m (34ft x 30ft)	30	40	30	117	35	60	100	-
COLMORE 8m x 7m (26ft x 23ft)	20	24	27	68	24	40	68	-
REGENT 7.5m x 7m (24ft x 23ft)	20	28	27	66	24	40	60	-
TEMPLE 15m x 6m (50ft x 20ft)	44	50	48	112	50	60	100	-
HORTON 00m x 00m (00ft x 00ft)	-	-	-	-	-	-	50	-



GROUND FLOOR

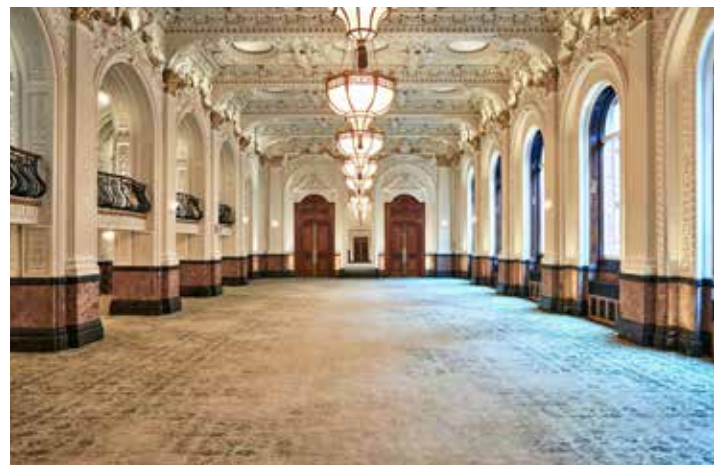


GRAND BALLROOM

28m x 11m (92ft x 36ft)
Banqueting 250
Cocktail Reception 500
Cabaret 200
Classroom 176
Theatre 500

BALLROOM BALCONY

20m x 3.5m (65ft x 11ft)



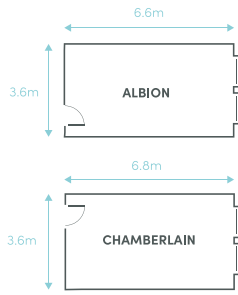
HORTON

00m x 00m (00ft x 00ft)
Cocktail Reception 50

FIRST FLOOR

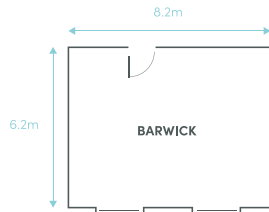
ALBION & CHAMBERLAIN

Identical rooms with fixed boardroom tables.
6.5m x 3.5m (22ft x 12ft)
Boardroom 12
Private Dining 12



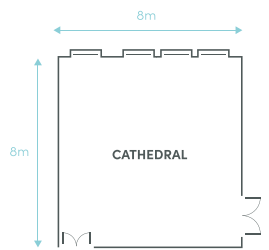
BARWICK

8m x 6m (26ft x 20ft)
Boardroom 14
Cabaret 24
Classroom 27
Theatre 50
U-Shape 14
Private Dining 14
Reception 30



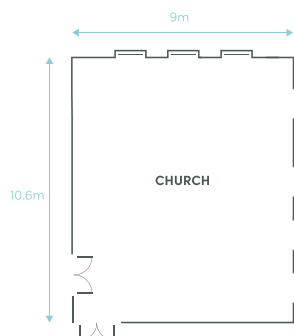
CATHEDRAL

8m x 8m (26ft x 26ft)
Boardroom 20
Cabaret 16
Classroom 21
Theatre 48
U-Shape 22
Private Dining 36
Reception 52



CHURCH

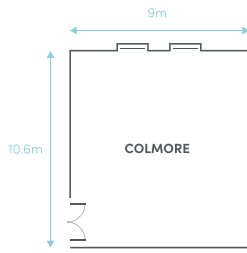
10.5m x 9m (34ft x 30ft)
Boardroom 30
Cabaret 40
Classroom 30
Theatre 117
U-Shape 35
Private Dining 60
Reception 100



COLMORE

8m x 7m (26ft x 23ft)

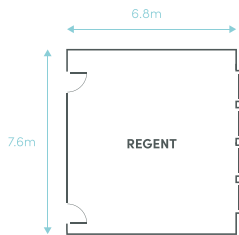
- Boardroom 20
- Cabaret 24
- Classroom 27
- Theatre 68
- U-Shape 24
- Private Dining 40
- Reception 68



REGENT

7.5m x 7m (24ft x 23ft)

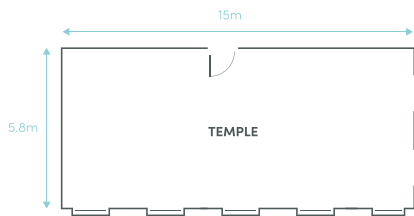
- Boardroom 20
- Cabaret 28
- Classroom 27
- Theatre 66
- U-Shape 24
- Private Dining 40
- Reception 60



TEMPLE

15m x 6m (50ft x 20ft)

- Boardroom 44
- Cabaret 50
- Classroom 48
- Theatre 112
- U-Shape 50
- Private Dining 60
- Reception 100



ROOM DIMENSIONS ARE APPROXIMATE: FOR SCALE PLANS AND PRECISE MEASUREMENT, PLEASE CONTACT THE HOTEL TEAM.

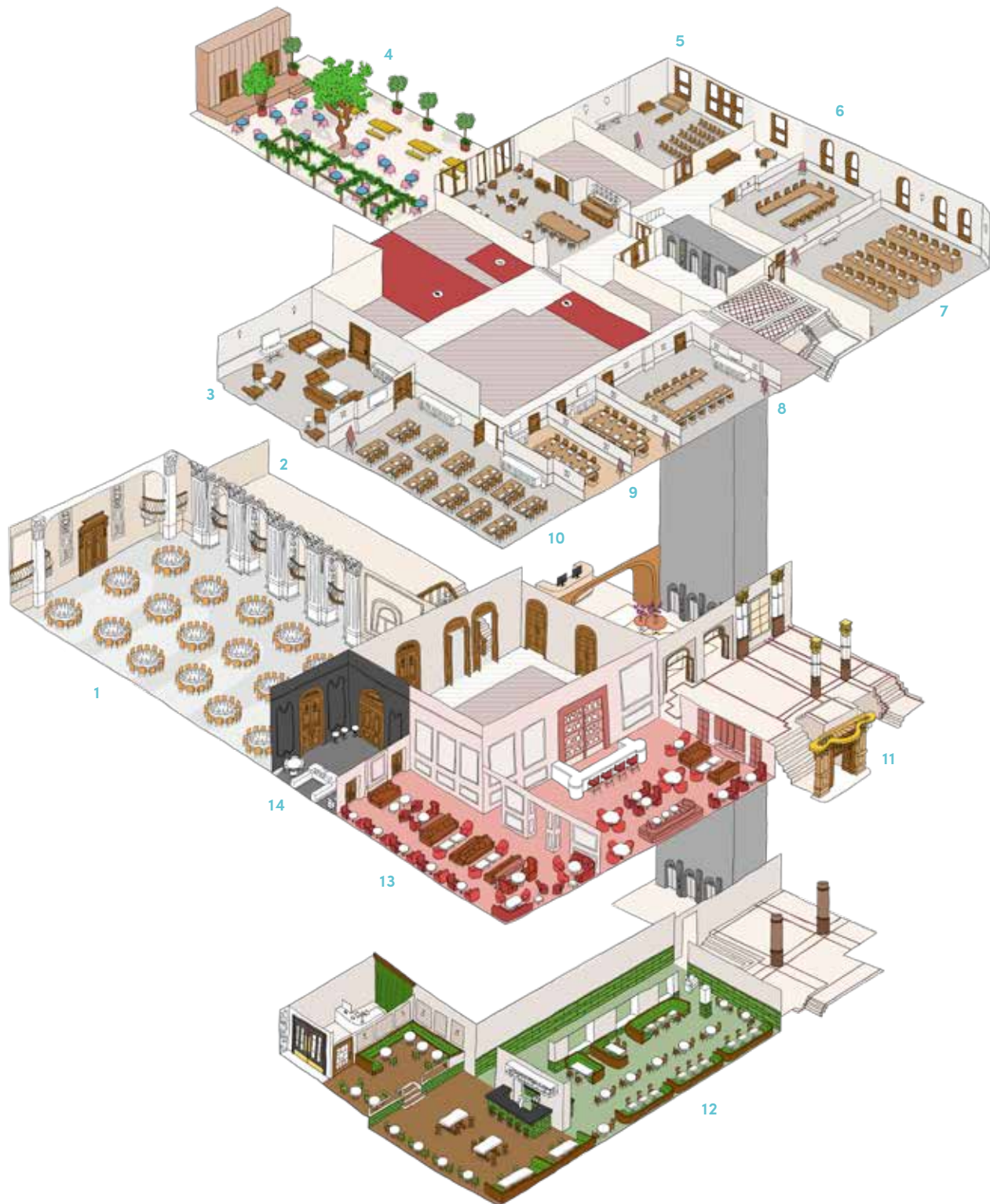
1 GRAND BALLROOM
2 BALLROOM BALCONY
3 BARWICK
4 GARDEN TERRACE

5 CATHEDRAL
6 COLMORE
7 CATHEDRAL
8 REGENT

9 ALBION & CHAMBERLAIN
10 TEMPLE
11 HOTEL ENTRANCE & LOBBY
12 ISAAC'S RESTAURANT

13 MADELEINE BAR
14 HORTON

Illustration by Claire Rollet



AT A GLANCE

Grand Ballroom For Up To 500 Guests
9 Additional Meeting & Event Spaces
Fully Accessible
Free Super-fast Wi-Fi
185 Guest Rooms & Suites
Duplex Penthouse Apartment
Nespresso Coffeemaker
Smart HDTV & Chromecast
Tea, Coffee, Milk & Mineral Water (all rooms)
Complimentary Mini Bar (all suites)
24-Hour Room Service
Madeleine Bar
Isaac's New York-Style Brasserie
Hotel Gym
Landmark, Listed Building

Photography by Tom Mannion
Additional photography by Danny Burrows; Tim Cole;
Peter Jackson; Dan Knott; Stefan Paiu; and Paul Raeside
Design by www.thisiscolt.com



THE GRAND HOTEL BIRMINGHAM, COLMORE ROW, BIRMINGHAM B3 2BS
TEL: +44 (0)121 827 9600 SALES@GRANDBIRMINGHAM.CO.UK