

THE ART OF THE GRAND



THE ART OF THE GRAND

Curated by Art Story

Cover Image: "Lemprière" by Tegen Richardson



The Art Of The Grand Curated By:

Art story

FOR

THE GRAND HOTEL BIRMINGHAM
COLMORE ROW | BIRMINGHAM B3 2BS

In Partnership With:



CONTENTS

INTRODUCTION	2
THE GRAND STAIRCASE & PUBLIC AREAS	7
BEDROOMS & SUITES	59
MADELEINE	85
ISAAC'S	97
MEETINGS & EVENTS	101
ACKNOWLEDGMENTS	118

GRAND HOTEL
BIRMINGHAM

INTRODUCTION

This collection of over 200 artworks pays homage to the stunning architecture and rich past of The Grand Hotel Birmingham while also telling stories that celebrate the city of Birmingham and its people in an original and contemporary way.

Art Story's brief was to curate a collection that takes a fresh and unexpected look at the Hotel's history and draws inspiration from Birmingham's inventive characters, landmarks and heritage.

By digging deep, Art Story were able to uncover fascinating stories that inspired this collection of original paintings, fine art prints, photographs, mixed media and 3-D wall art. Most of the pieces were specially commissioned for the hotel.

Many of the artists who collaborated on the project were specifically chosen because of their links to the Birmingham area. They include:

Andy Bartlett
 Andy Tromans
 Angela Keeler
 Arthur Mace
 Betsy Bradley
 Brigitte Thomas
 Drew Platt
 Karolina Skowronska
 Katie Walter
 Ian Bramhan
 Jessica Dismorr
 Jo McGaffin
 Lorena Martinez Carruana
 Lynn Jefferey
 Maddy Yeoman
 Mel Skellon
 Paul Hipkiss
 Soyoung Kim
 Tegen Richardson
 Tom Hicks



Fashion Forward
Art Story Studio
 Location: Grand Staircase

Sound Wave
Andy Bartlett
 Location: The Grand Staircase

Keep On Running
Art Story Studio
 Location: Penthouse Suite

Artwork Cluster
Art Story Studio
 Location: Junior Suite

Hattie
Art Story Studio
 Location: Junior Suite



HISTORY IN THE MAKING

A Grade II listed landmark building, the Grand Hotel was originally opened by Isaac Horton back in 1879 to designs by Thomson Plevins. Horton's vision was to create a hotel of the standard of the best that London and Paris had to offer at the time, with opulent public spaces and a sweeping staircase. Over the years, the Grand has welcomed royalty and rock stars and it has been a hub in the city for meetings and networking as well as events in the breath-taking Grand Ballroom.

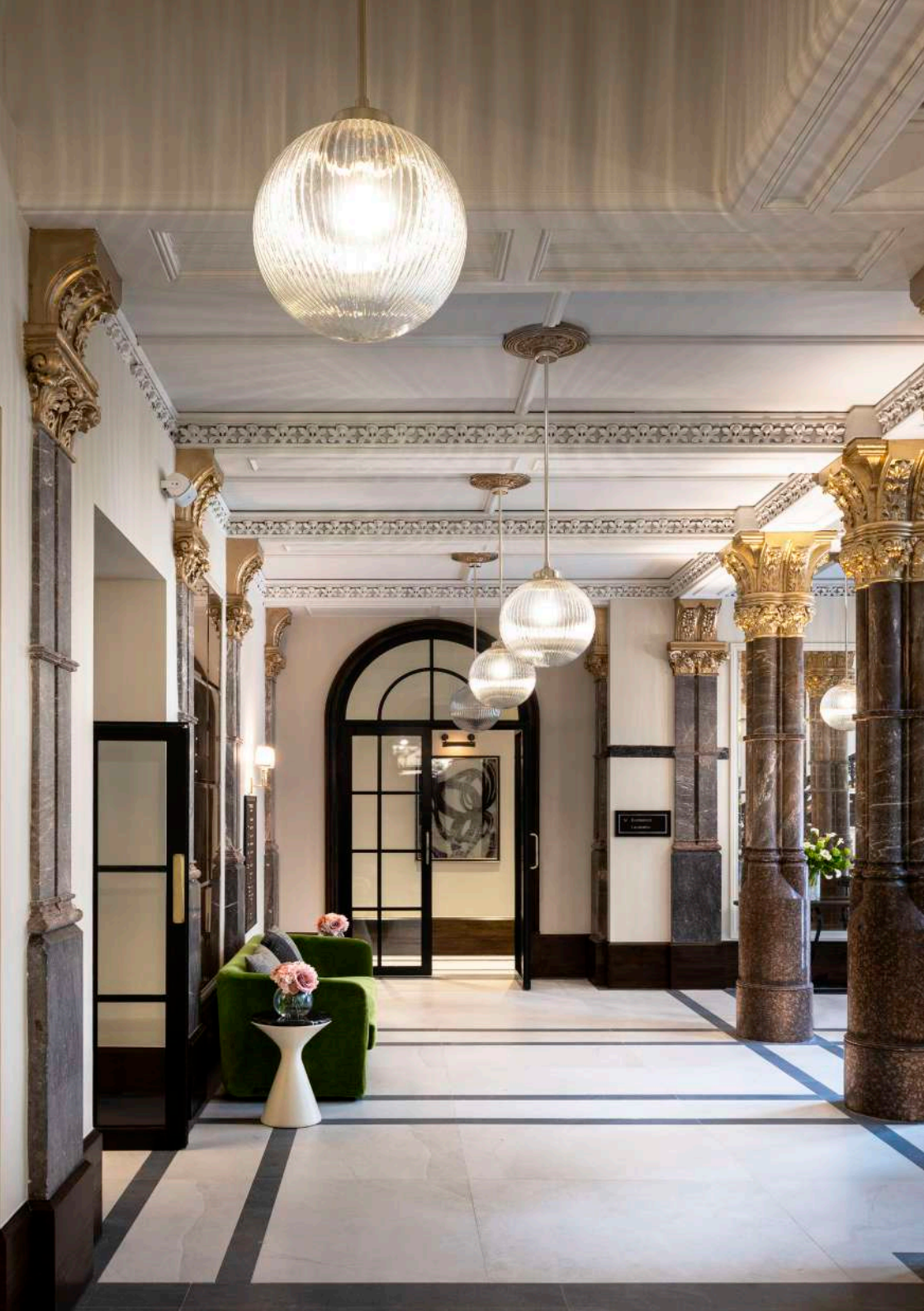
Having been closed for almost 20 years, the Grand re-opened in 2021 following a £50 million restoration and refurbishment, with designs by Robert Angell. As the latest chapter in the hotel's history takes shape, the Grand celebrates its past while being very much a reflection of Birmingham today: vibrant, inclusive and welcoming. Whether you are staying at the hotel, partying in the Grand Ballroom, attending a corporate event, sipping cocktails in Madeleine or eating in Isaac's, you'll find yourself surrounded by some of the remarkable artwork featured in this brochure.



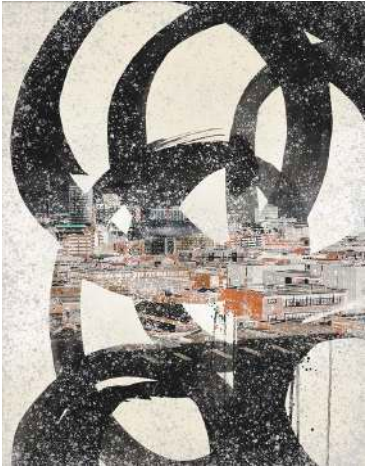
Opposite
The restored facade on Colmore Row

Above
The Grand Ballroom

Left
Madeleine bar



THE GRAND STAIRCASE & PUBLIC AREAS



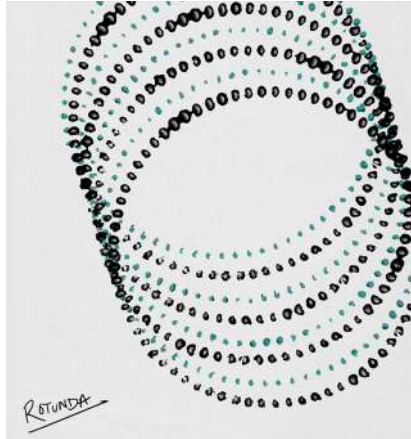
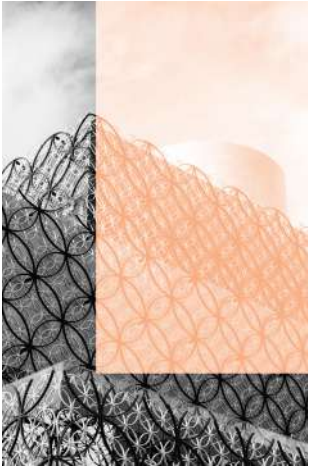
Looking at The City I, II & III
Art Story Studio
Location: Entrance

Three antiqued mirrors with an abstract design printed onto the reverse of the mirror. An urban aesthetic has been introduced with subtle photography of the city.



Dancing with Light
Art Story Studio
Location: Entrance

An original artwork piece accented by neon tube highlights encased in a custom made acrylic box. Inspired by Birmingham's Royal Ballet, the neon enhances the movement in the image, creating a dynamic piece full of energy.



The New Library
Lorena Martínez Carruana
 Location: Lobby
 Giclée print of the new Library of Birmingham, construction of which was completed in 2013.

Learn to Think
Lorena Martínez Carruana
 Location: Lobby
 The Joseph Chamberlain Memorial Clock Tower is located in the University of Birmingham. Founded in 1900, Birmingham University represented a new model for higher education.

Dome
Lorena Martínez Carruana
 Location: Lobby
 Giclée print of the domed roof of Birmingham City Council House represented as a digital 'glitch'.

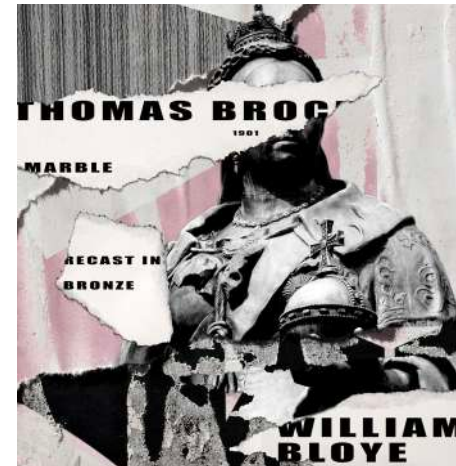
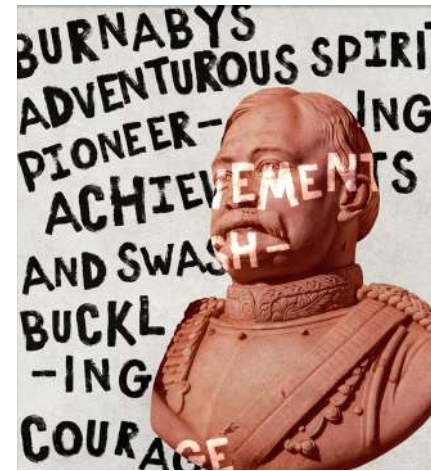
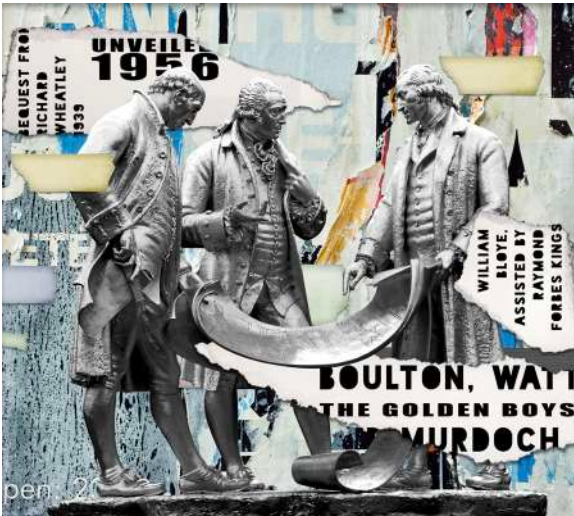
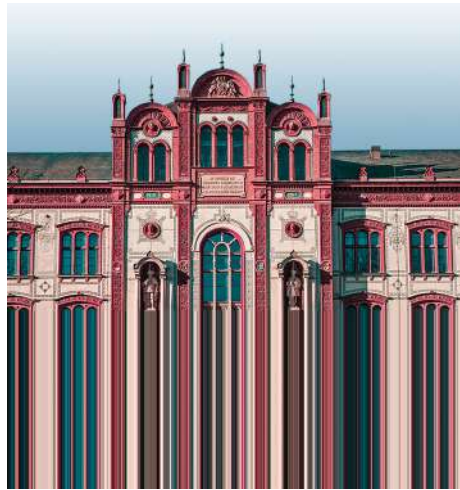
The Rotunda
Tegen Richardson
 Location: Lobby
 This minimalist abstract artwork is based on the Rotunda. An iconic cylindrical high-rise building in Birmingham, the Rotunda is a Grade II listed building, gracing Birmingham's skyline since 1965.

Pagoda
Joanne McGaffin
 Location: Lobby
 Artwork showing the Chinese Pagoda carved in Fujian, China and donated to Birmingham by the Wing Yip brothers, in thanks to the city and its people for providing a home for them and their families.

Street Life
Art Story Studio
 Location: Lobby
 A photograph of people leaving New Street Station with the Rotunda in the background.

Iron:Man
Art Story Studio
 Location: Lobby
 Giclée print depicting the Iron:Man statue by Antony Gormley, in Victoria Square, Birmingham.

Council House
Lorena Martínez Carruana
 Location: Lobby
 Surrealist collage of Birmingham City Council House.



A38(M)
Art Story Studio
 Location: Lobby
 Monotone photographic art interpretation of Spaghetti Junction.

Facade
Art Story Studio
 Location: Lobby
 Surreal interpretation of a facade of Birmingham University.

The Golden Boys
Tegen Richardson
 Location: Lobby
 Collage showing Boulton, Watt and Murdoch, a gilded bronze statue depicting Matthew Boulton, James Watt, and William Murdoch by William Bloye, assisted by Raymond Forbes Kings.

The Diver
Art Story Studio
 Location: Lobby
 Artwork composition showing the diving Sculpture from the Waterfront Walk in Birmingham transposed onto the rooftop of The Grand Hotel.

Freddie
Art Story Studio
 Location: Lobby
 Inspired by the life and times of the British Army intelligence officer, Colonel Frederick Gustavus Burnaby. As well as traveling across Europe and Central Asia, he mastered ballooning, spoke a number of foreign languages fluently and stood for parliament twice. His memorial stands in the grounds of St Phillip's Cathedral (opposite the Hotel).

Vic
Art Story Studio
 Location: Lobby
 A collage that references the Birmingham sculpture of Queen Victoria, original by Thomas Brock (1901 in marble), recast in bronze by William Bloye (1951).

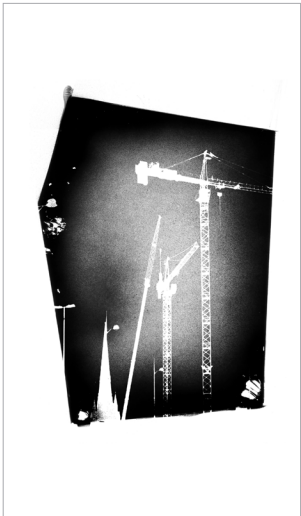
City People
Art Story Studio
 Location: Lobby
 Urban street scene photograph with abstract geometric treatment.



Double Life
Archive photograph
 Location: Lobby
 Street photography of a bird and a pub reflected in a puddle in Birmingham.

Curve
Art Story Studio
 Location: Lobby
 Abstract minimal interpretation of the facade of Selfridges' iconic Birmingham store originally designed by architects Future Systems.

Cranes are Ace
Art Story Studio
 Location: Lobby
 Monochrome art print of cranes in Birmingham, celebrating Birmingham's constant regeneration and renewal.

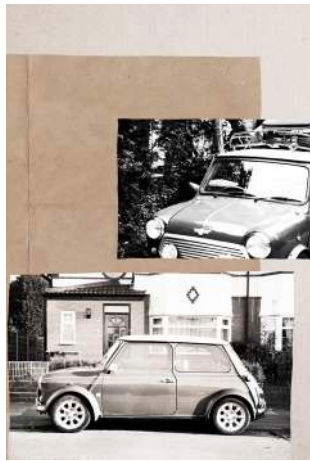


Spaghetti
Tegen Richardson
 Location: Lobby
 A fine art print of an original minimalist painting which references the aerial view of 'Spaghetti Junction' or to give its official name the Gravelly Hill Interchange where the M6 meets A38(M).

Our Weapon is Peace
Art Story Studio
 Location: Lobby
 Montage inspired by the sculpture of Thomas Attwood in Chamberlain Square. Attwood was a Chartist Leader and first MP for Birmingham. "Our Weapon is Peace" was one of his more famous quotes.

Angels
Art Story Studio
 Location: Lobby
 A contemporary interpretation of a sculpture by Albert Toft. The original features within the Hall of Memory (Centenary Square) and represents the Nursing services.

Guardians
Art Story Studio
 Location: Lobby
 A collage inspired by and showing the 'Guardian Dogs' which welcome people at the entrance to 'Pagoda Island' on Birmingham's Queensway.

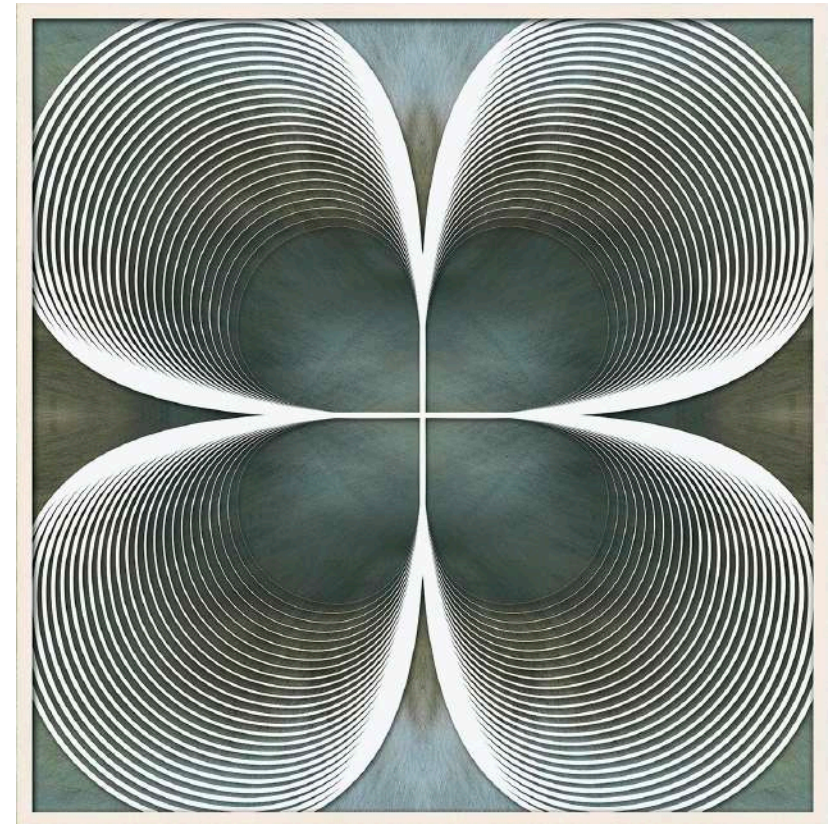


Operator
Art Story Studio
 Location: Grand Ballroom Lobby
 Collage of a factory machine operator from the Spitfire manufacturer in the 1940s at Castle Bromwich Aeroplane Factory.

Bath Style
Tverdohlib
 Location: Grand Ballroom Lobby
 Black & White fashion lifestyle photograph of a fully dressed woman in a bath tub full of clothes.

All your Heart
Angela Keeler
 Location: Grand Ballroom Lobby
 Giclée print of a graphic fashion collage.

Longbridge
Art Story Studio
 Location: Grand Ballroom Lobby
 This piece highlights Birmingham's history with the Mini, which was produced at the Longbridge site from 1959-2000. By the late 1960s, Longbridge was the biggest car plant in the world and employed around 250,000 workers.



Echo
Art Story Studio
 Location: Grand Ballroom Lobby
 Geometric artwork inspired by the striking roof of Grand Central (New Street) Station.



Catwalk I, II, III, IV, V & VI
Art Story Studio

Location: Grand Ballroom Corridor

A series of 7 surreal photographic montages, combining dresses and suits from the late 19th century. The historical clothing is a reminder of what guests might have worn at the time of the hotel's opening.



The Girl
Karolina Skowronska
Location: Grand Ballroom Corridor

A pair of oversized original paintings with compositions inspired by "The Youth" water fountain which depicts a boy and a girl facing each other at either end of the fountain in central Birmingham.



The Boy
Karolina Skowronska
Location: Grand Ballroom Corridor



Weathered Door
Tom Hicks
 Location: Horton Room
 Photography of a detail from the Jewellery Quarter by Tom Hicks; an artist, writer and curator from Kingswinford. A self-taught photographer who captures the gritty, urban side of the Industrial Midlands.

Express
Arthur Mace
 Location: Horton Room
 Arthur Mace has captured the full excitement of a departing express as felt by the trainspotter as he watched Castle Class 4-6-0 No 5025 'Chirk Castle' depart from Birmingham Snow Hill Station.



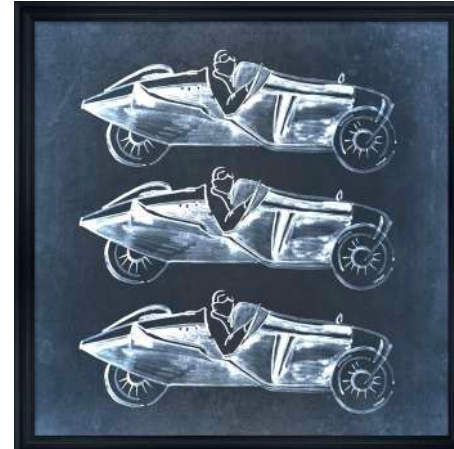
Grand Shapes
Art Story Studio
 Location: Horton Room
 Abstract artwork inspired by the hotel's striking architecture.



Town Hall
Art Story Studio
 Location: Horton Room
 Abstract painting of Birmingham Town Hall and the Chamberlain Memorial.

3 Race Cars
Art Story Studio
 Location: Horton Room
 Painting of a race car based on an example from Horton's photographic archive.

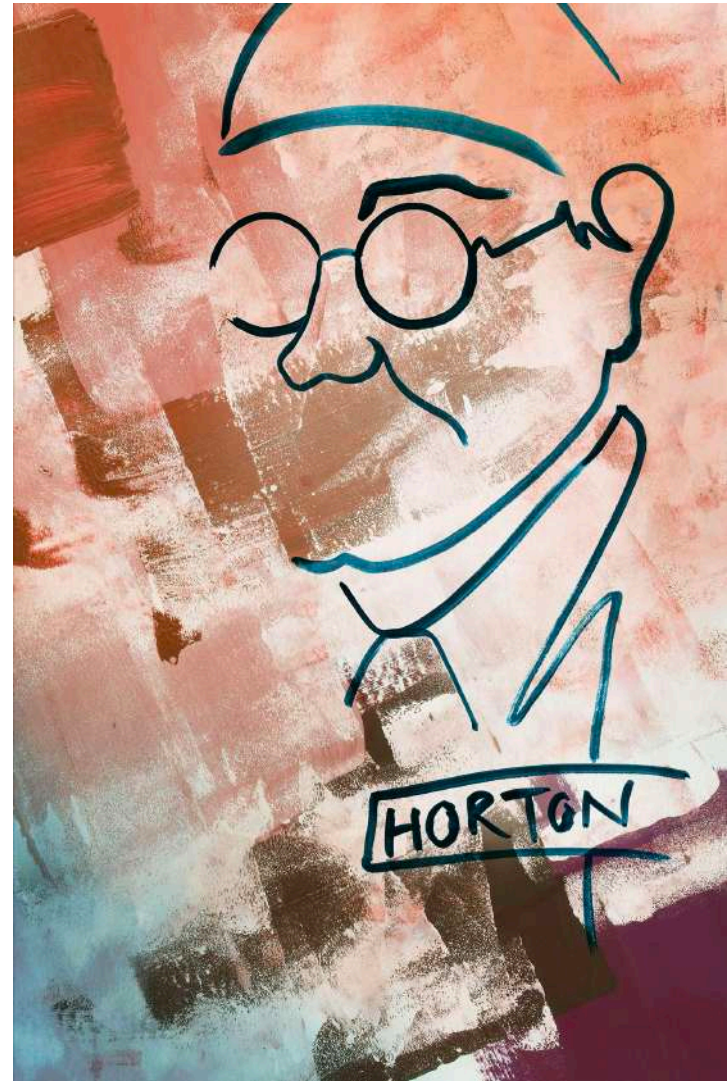
A Grand Post Card
Original artifact
 Location: Horton Room
 Original Grand Hotel postcard dated 1925.





The Old Library
Karolina Skowronska
Location: Horton Room

Single edition print taken from an original abstract painting of the iconic, brutalist Birmingham Central Library which was demolished in 2016.



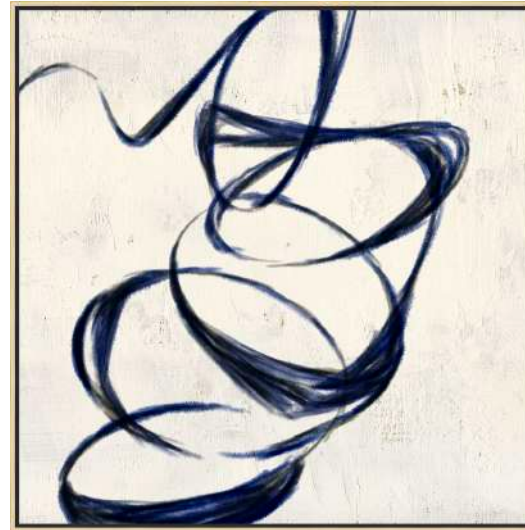
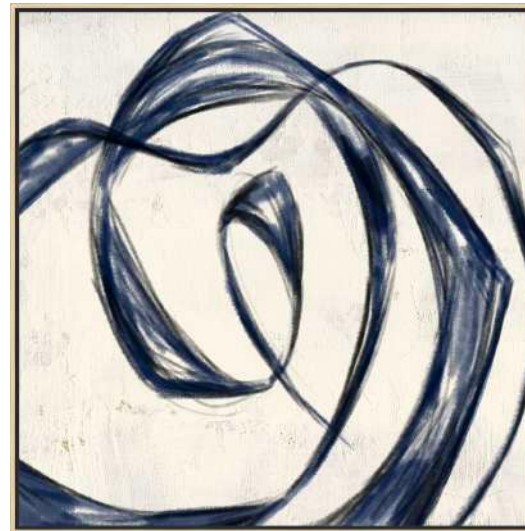
R.T. Horton
Karolina Skowronska
Location: Horton Room

Single edition print taken from an original painting of Ronald Tombs Horton, inspired by a poster in Horton's archive collection.



White Noise
Art Story Studio
 Location: Grand Ballroom Corridor

Original abstract textural painting inspired by the flow and movement of Spaghetti Junction.



Facades I & II
 Location: Grand Ballroom Corridor

The composition of this pair of original paintings on canvas was inspired by the iconic circular pattern on the facade of the Selfridges' Birmingham Store; one of the city's most iconic buildings.



Smoke I & II
Art Story Studio
 Location: The Grand Staircase

A Pair of artworks showing abstract renderings of smoke, reverse printed onto glass. Inspired by the city's industrial past.



Lord Bodkin Arrowhead
Art Story Studio
 Location: The Grand Staircase

A playful old-meets-new artwork celebrating Birmingham's arrowhead making past. By the early 16th century Birmingham was already a renowned centre of metal working. When Henry VIII was making plans to invade Scotland in 1523, Birmingham smithies supplied bulk orders for bodkin arrowheads for use by his army.

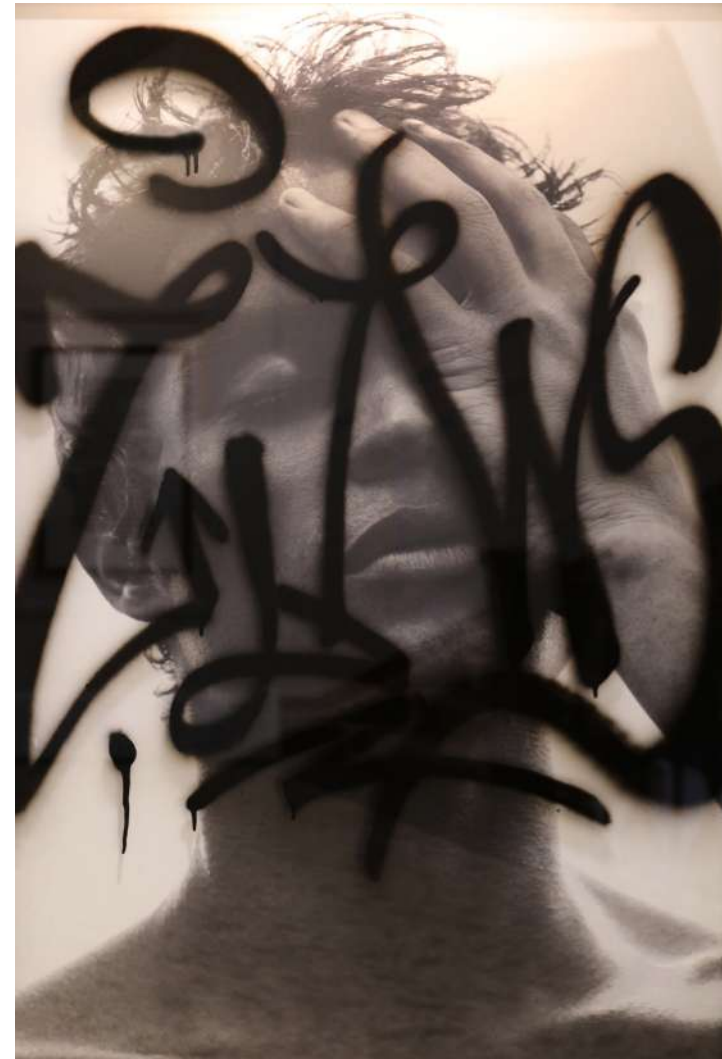


Her Tag
Art Story Studio

Location: The Grand Staircase

Portrait artwork with a graffiti tag spray painted onto the reverse of the glass inspired by the city's street culture.

Photo credit: Sanne Berg



His Tag
Art Story Studio

Location: The Grand Staircase

Portrait artwork with a graffiti tag spray painted onto the reverse of the glass inspired by the city's street culture.

Photo credit: Lumezia



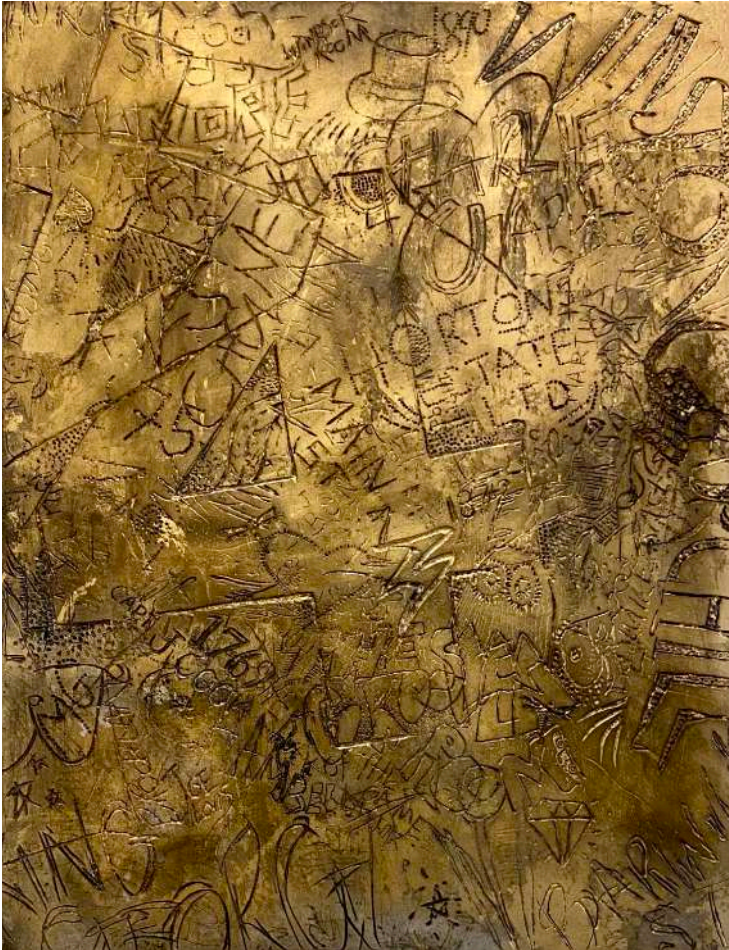
Gem I & II
Art Story Studio
 Location: The Grand Staircase

A pair of 3D pieces inspired by Birmingham's famous Jewellery Quarter. Abstract contemporary faceted 3D shapes hand painted to echo the reflections of light in precious stones.



Sound Wave
Andy Bartlett
 Location: The Grand Staircase

This sculpture of angled shards of polished Champagne brass arrayed in a circular wave was inspired by music, rhythm and percussion as an homage to the legendary Birmingham bands.



24 Carat Vandal
Art Story Studio

Location: The Grand Staircase

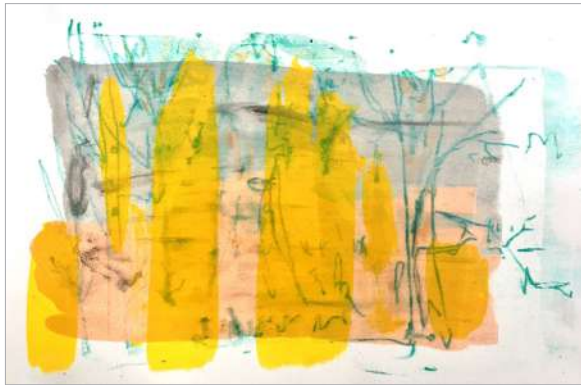
Scratched into the artwork are facts, names, dates and doodles relating to the history of the hotel, including: Colmore Row, Church Street, Barwick Street and Livery Street, Thomson Plevins, 1875, 1st February 1879, King George VI, Winston Churchill, Neville Chamberlain, Charlie Chaplin, James Cagney and Joe Louis.



The Old Main Line
Art Story Studio

Location: The Grand Staircase

A minimalist light installation that softly glows highlighting the meandering course of the historic old Main Line of the Birmingham Canal. This important 22 mile route between Birmingham and the Black Country was built by engineer James Brindley.



Unique Screenprint 3, 5 & 6
Betsy Bradley
Location: The Grand Staircase

A set of 3 unique screen prints from Betsy's 2018 collection.



Feng Shui
Betsy Bradley
Location: The Grand Staircase

Original painting, Acrylic on organza
Displayed in an acrylic box. Having graduated from Birmingham School of Art with an MA Fine Art in 2018, Betsy is one of the emerging new art talents living and working in Birmingham.



Kaleidoscope
Art Story Studio

Location: The Grand Staircase

A light installation art piece inspired by Brewster's Patent Kaleidoscope which was first manufactured in Birmingham in 1817.



Paint the Town Red
Karolina Skowronska

Location: The Grand Staircase

Original painting on canvas, this abstract artwork celebrates the vibrancy of the city and it's local art scene.



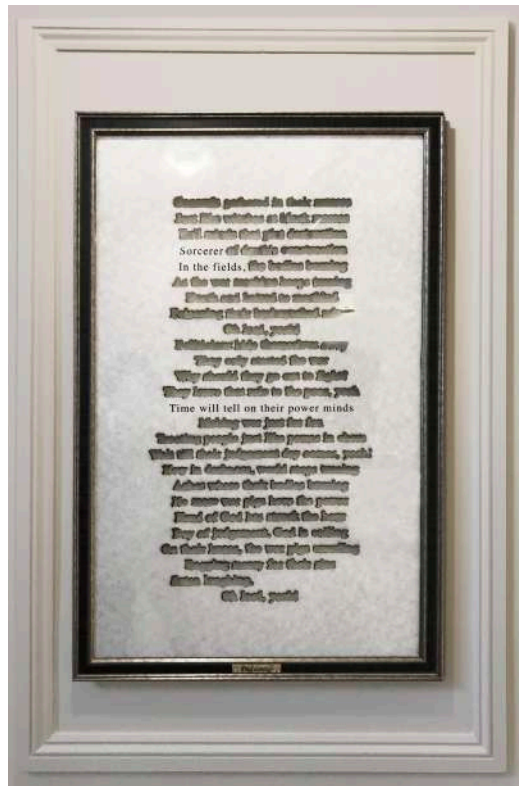
The Jewellery Plates
Art Story Studio
 Location: The Grand Staircase

Fifteen bespoke printed 20cm diameter plates framed in an acrylic box. The Jewellery Quarter is Europe's largest concentration of businesses involved in the jewellery trade, which produces 40% of all the jewellery made in the UK. It is also home to the world's largest Assay Office, which hallmarks around 12 million items a year.



The Steam Engine Plates
Art Story Studio
 Location: The Grand Staircase

Fifteen bespoke printed 20cm plates framed in an acrylic box showing James Watt's single-acting steam engine for Chelsea Water Works. An eighteenth century Copperplate engraving by Wilson Lowry after an Illustration by J. Farey from Abraham Rees' "Cyclopedia or Universal Dictionary" London, 1817.



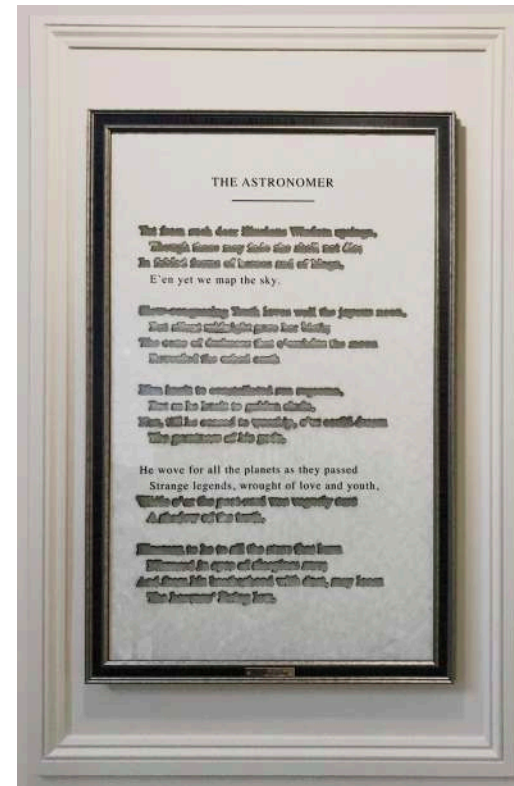
War Pigs Art Story Studio

Location: The Grand Staircase

Laser cut paper artwork featuring the lyrics to 'War Pigs' by Birmingham band, Black Sabbath.

Songwriters: Iommi Anthony Frank / Osbourne John / Butler Terence Michael / Ward W T
War Pigs Lyrics © Westminster Music Ltd., Westminster Music Ltd.

'Generals gathered in their masses
Just like witches at black masses
Evil minds that plot destruction
Sorcerer of death's construction
In the fields, the bodies burning
As the war machine keeps turning
Death and hatred to mankind
Poisoning their brainwashed minds
Oh lord, yeah!
Politicians hide themselves away
They only started the war
Why should they go out to fight?
They leave that role to the poor, yeah
Time will tell on their power minds
Making war just for fun
Treating people just like pawns in chess
Wait till their judgment day comes, yeah!
Now in darkness, world stops turning
Ashes where their bodies burning
No more war pigs have the power
Hand of God has struck the hour
Day of judgment, God is calling
On their knees, the war pigs crawling
Begging mercy for their sins
Satan laughing, spreads his wings
Oh lord, yeah!



The Astronomer Art Story Studio

Location: The Grand Staircase

Laser cut paper artwork featuring an extract from "The Astronomer" by Birmingham Poet, Constance Naden, written circa 1880.

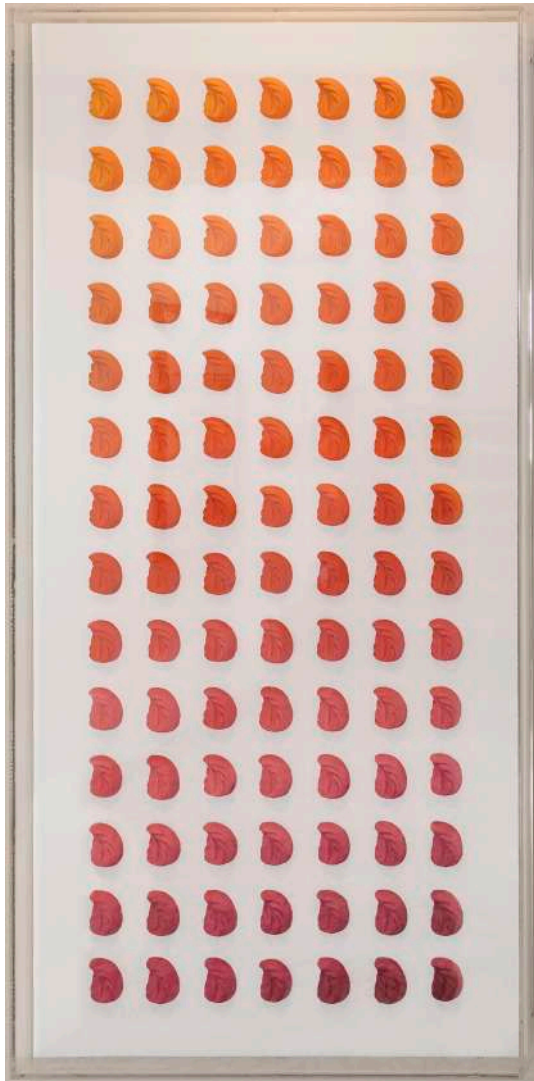
"Yet from such dear illusions Wisdom springs,
Though these may fade she shall not die;
In fabled forms of heroes and of kings,
E'en yet we map the sky.

Slow-conquering Truth loves well the joyous noon,
But silent midnight gave her birth;
The cone of darkness that o'ershades the moon
Revealed the orb'd earth.

Man knelt to constellated suns supreme,
But as he knelt to golden clods,
Nor, till he ceased to worship, e'er could dream
The greatness of his gods.

He wove for all the planets as they passed
Strange legends, wrought of love and youth,
While o'er the poet-soul was vaguely cast
A shadow of the truth.

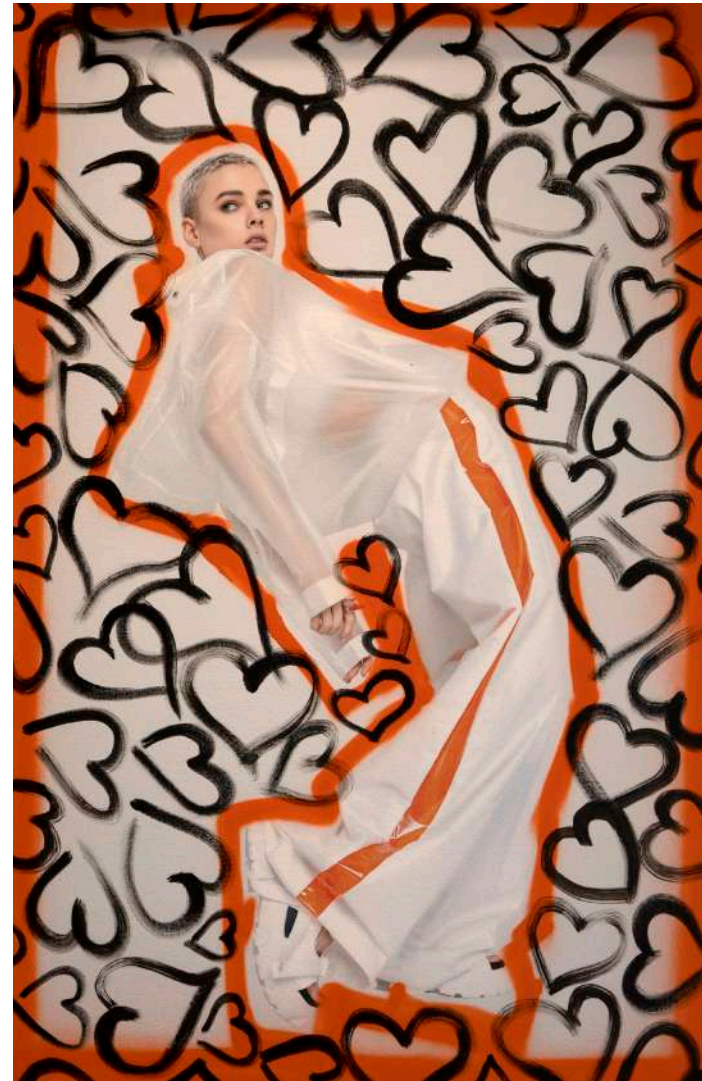
Kinsman is he to all the stars that burn
Mirrored in eyes of sleepless awe;
And from his brotherhood with dust, may learn
The heavens' living law."



98 Scrolls
Art Story Studio

Location: Grand Staircase

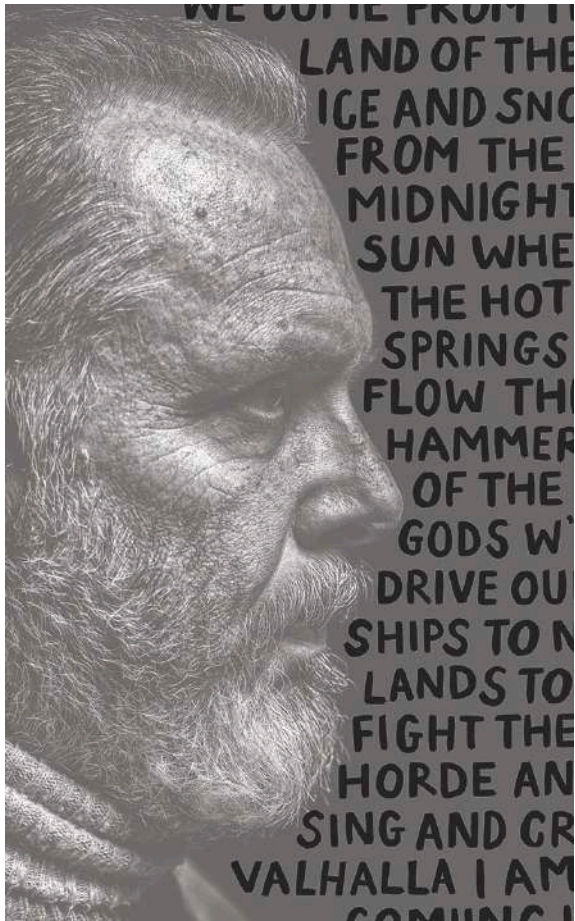
Inspired by the hotel's original decorative wall-mouldings this 3D art installation of 98 individual scroll pieces has been produced with an orange to pink gradient of colour.



Fashion Forward
Art Story Studio

Location: Grand Staircase

Fashion photography by Quantumpix with hand painted orange lines and hearts, celebrating Birmingham College of Art and Design.



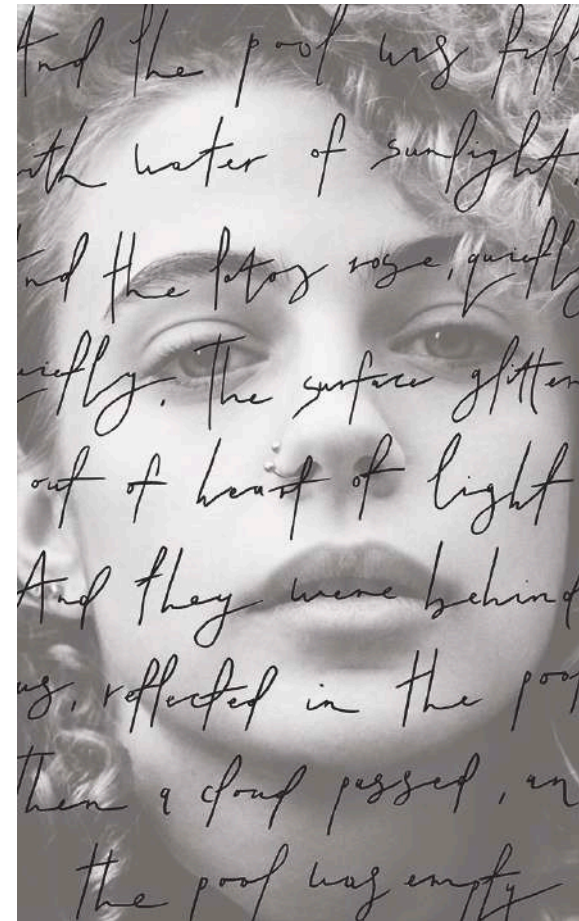
The Hammer of the Gods
Art Story Studio

Location: The Grand Staircase

Portrait photography with a hand-painted extract from 'Immigrant Song' by local band, Led Zeppelin:

'We come from the land of the ice and snow
 From the midnight sun, where the hot springs flow
 The hammer of the gods
 We'll drive our ships to new lands
 To fight the horde, and sing and cry
 Valhalla, I am coming!'

Songwriters: Jimmy Page / Robert Plant
 Immigrant Song lyrics © Warner Chappell Music, Inc

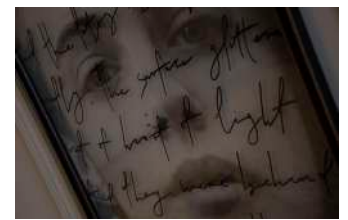


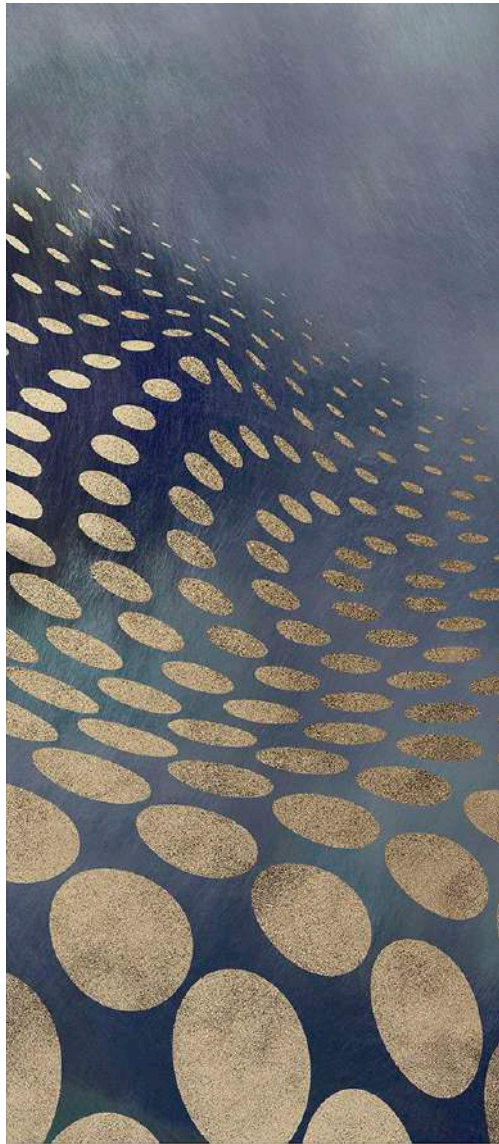
Burnt Norton
Art Story Studio

Location: The Grand Staircase

Portrait photography with a hand-painted extract from 'Burnt Norton' by T. S. Eliot which is engraved around upper pool of "The River" sculpture in Victoria Square:

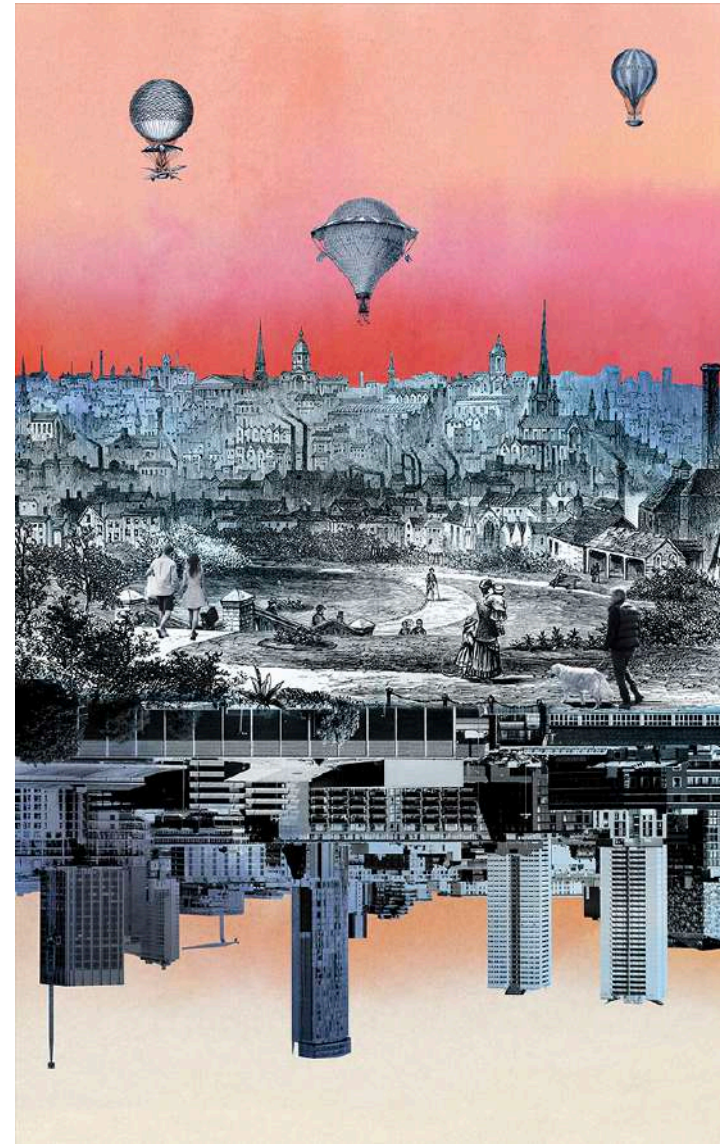
'And the pool was filled with water out of sunlight,
 And the lotos rose, quietly, quietly,
 The surface glittered out of heart of light,
 And they were behind us, reflected in the pool.
 Then a cloud passed, and the pool was empty.'





No Straight Lines
Art Story Studio
 Location: The Grand Staircase

Sweeping geometric abstract artwork inspired by the facade of Selfridges' iconic Birmingham store.



Lemprière
Tegen Richardson
 Location: The Grand Staircase

Digital collage combining a photograph of contemporary Birmingham with an engraving of the city. George Philip Lemprière remains one of Handsworth's most colourful characters from the past. Born in 1855 in London he arrived in Handsworth as a young man to study his first love of Aeronautics. Lemprière's displays and exhibitions were a major crowd pleasing attraction wherever he went. He stood for MP in Birmingham unsuccessfully despite his unique campaign style - leafleting the public from his hot air balloons!

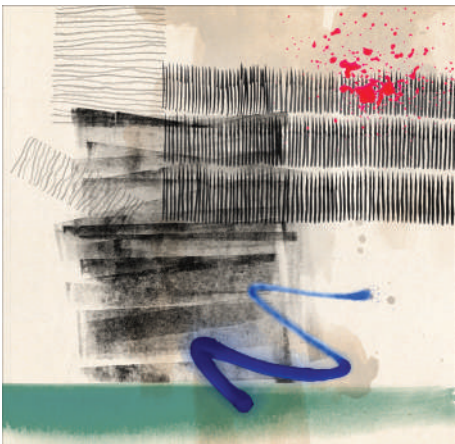


Skate Wheels
Tegen Richardson
 Location: Guest Room Corridors
 Limited edition giclée print of original abstract painting inspired by the invention of Aeolus Skate Wheels with Ball bearings. These were patented by William Brown & Joseph Henry Hughes, Birmingham in 1877.

Stand Alone Cooker
Maddy Yeoman
 Location: Guest Room Corridors
 Limited edition giclée print of original abstract painting inspired by the invention of the Standalone Cooking Stove first produced by John Heard, Birmingham in 1800's.



Photocopier
Tegen Richardson
 Location: Guest Room Corridors
 Limited edition giclée print of original abstract painting inspired by the invention of the Photocopier created by James Watt, Birmingham, 1779.



Bicycle Bell
Maddy Yeoman
 Location: Guest Room Corridors
 Limited edition giclée print of original abstract painting inspired by the invention of the bicycle bell by John Richard Deadicoat, Birmingham, 1877.

X-Ray Scanner
Maddy Yeoman
 Location: Guest Room Corridors
 Limited edition giclée print of original abstract painting inspired by the first use of X-Ray imaging under clinical conditions by John Hall-Edwards, Birmingham, 1896.



Smoke Detector
Maddy Yeoman
 Location: Guest Room Corridors
 Limited edition giclée print of original abstract painting inspired by the invention of the Smoke Detector which was patented by George Andrew Darby, Birmingham, 1902.





Spectrometer
Maddy Yeoman
 Location: Guest Room Corridors
 Limited edition giclée print of original abstract painting inspired by the first fully functional Spectrometer which was invented by Francis William Aston, Birmingham, 1919.

Vacuum Cleaner
Maddy Yeoman
 Location: Guest Room Corridors
 Limited edition giclée print of original abstract painting inspired by the first portable vacuum cleaner which was invented by Walter Griffiths, Birmingham, 1905.

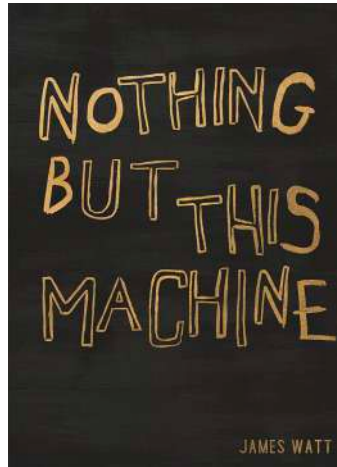
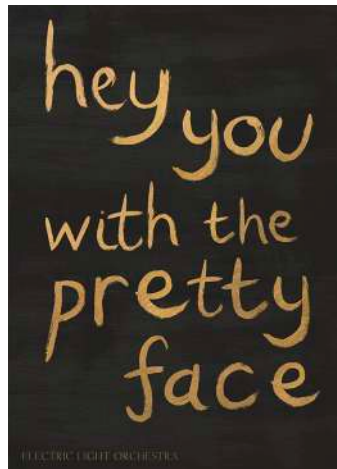
Electric Car Horn
Maddy Yeoman
 Location: Guest Room Corridors
 Limited edition giclée print of original abstract painting inspired by the Electric Car Horn which was invented by Lucas Industries, Birmingham, 1910.



West of the Moon I, II & III
Art Story Studio
 Location: Lift Lobbies
 This set of 3 striking gold & black fashion inspired artworks reference an extract from a verse from "The Lord of the Rings" by J.R.R. Tolkien, who grew up in Birmingham.

'Still round the corner there may wait
 A new road or a secret gate,
 And though I oft have passed them by,
 A day will come at last when I
 Shall take the hidden paths that run
 West of the Moon, East of the Sun.'





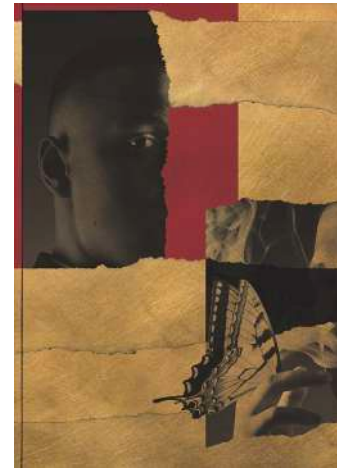
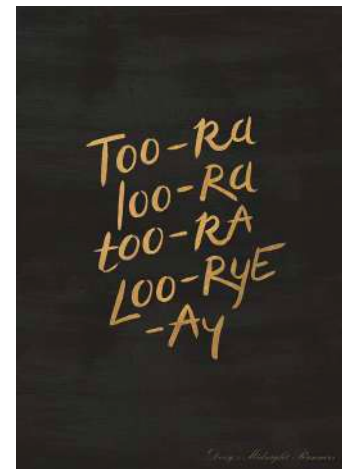
Hey You I & II
Art Story Studio

Location: Lift Lobbies
A pair of fashion & music inspired artworks includes song references from Birmingham band, Electric Light Orchestra. 'Hey, you with the pretty face' Lyric from Mr Blue Sky.

Songwriter: Jeff Lynne
Mr. Blue Sky lyrics © Sony/ATV Music Publishing LLC

This Machine I & II
Art Story Studio

Location: Lift Lobbies
A pair of fashion & industry inspired artworks referencing a quote 'Nothing but this machine' by James Watt, inventor of the steam engine.



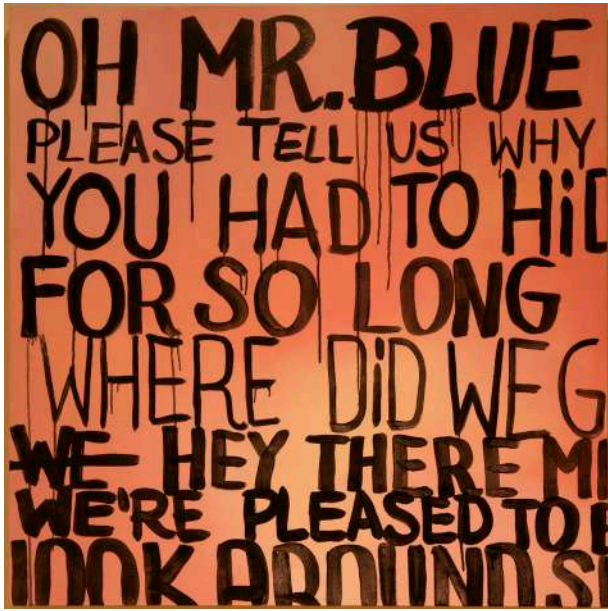
Too-Ra I & II
Art Story Studio

Location: Lift Lobbies
A pair of Fashion & music inspired artworks including song references from Birmingham band, Dexys Midnight Runners. 'Too-ra-loo-ra, too-ra-loo-rye, ay' Lyric from Come on Eileen.

Songwriters: James Mitchell Paterson / Kevin Adams / Kevin Antony Rowland
Come On Eileen lyrics © EMI Music Publishing Ltd, Rabasse Music, Ltd.

Courage Calls I & II
Art Story Studio

Location: Lift Lobbies
A pair of fashion & politics inspired artworks referencing 'Courage Calls' a quote from politician, writer and feminist, Millicent Fawcett.



Blue Rio I

Karolina Skowronska

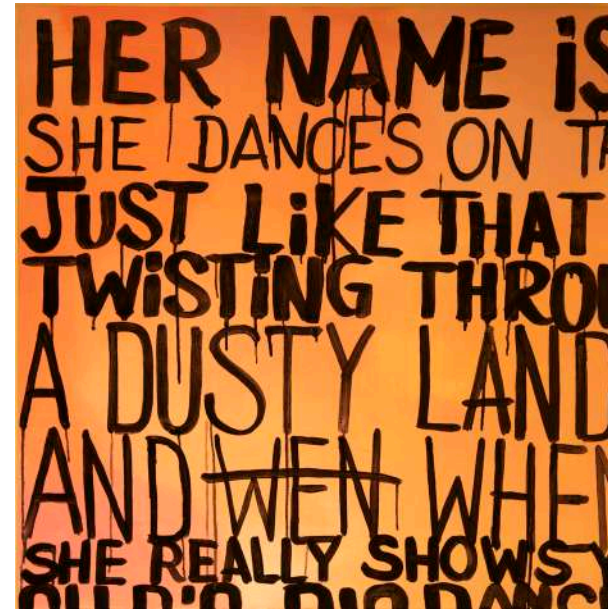
Location: Gym Corridor

A pair of hand-painted canvases with black typography on a coral background featuring lyrics from two of Birmingham's iconic bands.

Lyric extracts from Electric Light Orchestra's Mr Blue Sky.

"Oh Mr. Blue Sky please tell us why
You had to hide away for so long
Where did we go wrong?
Hey there Mr. Blue
We're so pleased to be with you
Look around see what you do
Everybody smiles at you"

Songwriter: Jeff Lynne
Mr. Blue Sky lyrics © Sony/ATV Music
Publishing LLC



Blue Rio II

Karolina Skowronska

Location: Gym Corridor

A pair of hand-painted canvases with black typography on a coral background featuring lyrics from two of Birmingham's iconic bands.

Lyric extracts from Duran Duran's Rio.

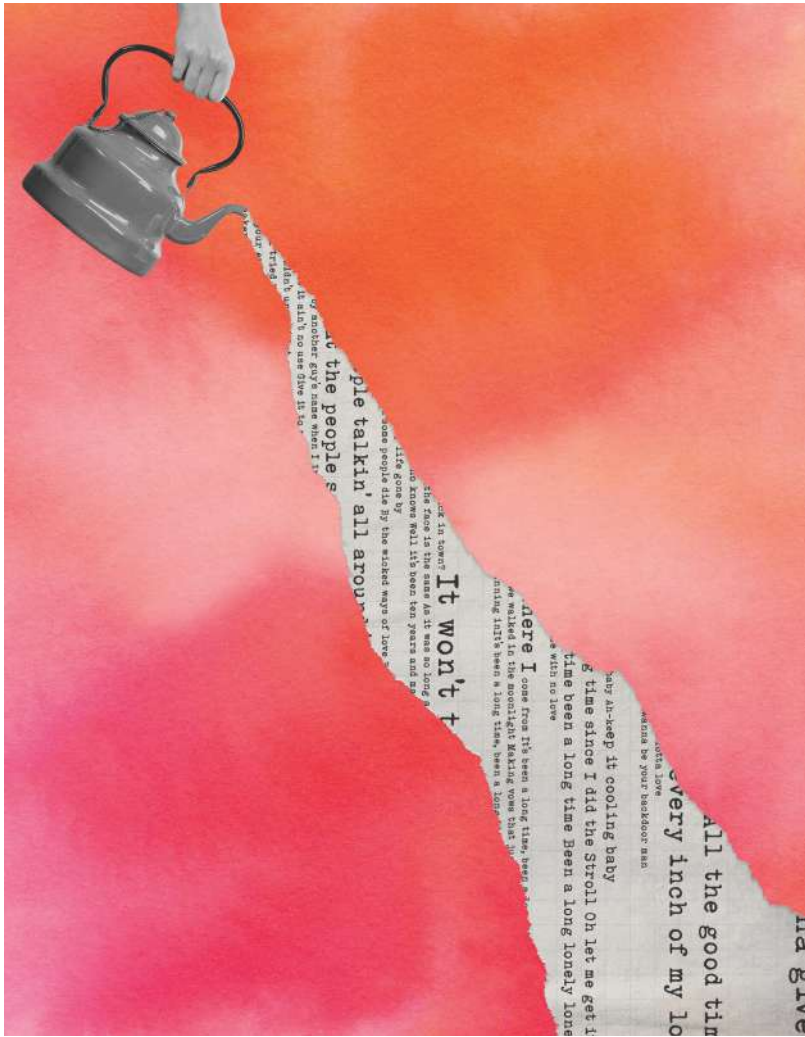
"Her name is Rio and she dances on
the sand
Just like that river twisting through a
dusty land
And when she shines she really shows
you all she can
Oh Rio, Rio dance across the Rio
Grande"

Songwriters: Andy Taylor, Simon Le
Bon, Nick Rhodes, John Taylor, Roger
Taylor
Lyrics © Sony/ATV Music Publishing LLC



BEDROOMS & SUITES





Whole Lotta Cuppa
Art Story Studio
 Location: Junior Suite

Original collage combining an iconic object invented in Birmingham (the electric kettle) together with song lyrics from 'Whole Lotta Love' by legendary local band Led Zeppelin.
 Songwriters: Robert Anthony Plant / John Bonham / John Paul Jones / James Patrick Page
 Whole Lotta Love lyrics © Warner Chappell Music, Inc



Blue Sky Thinking
Maddy Yeoman
 Location: Junior Suite

Limited edition giclée print from hand painted watercolour artwork inspired by fashion illustrations.



The Canal
Art Story Studio

Location: Junior Suite
 Quirky collage artwork combining photography of Birmingham canal, cloud photography and watercolour textures with a bespoke cut mount card to give the sense of looking through a portal.

Floozie in the Jacuzzi
Art Story Studio

Location: Junior Suite
 A comical collage inspired by the local nickname for "The River" sculpture by Dhruva Mistry in Victoria Square.

Daisy
Art Story Studio

Location: Junior Suite
 Surreal collage artwork combining fashion photography and daisies. The flowers are printed onto the reverse side of the glass.
 Photo credit: Lorado



Hattie
Art Story Studio

Location: Junior Suite
 Limited edition giclée print of a digital fashion collage.

Carmine
Art Story Studio

Location: Junior Suite
 Limited edition giclée print of a digital fashion collage.



Reflecting
Katie Walter

Location: Grand Suite
Layered collage art featuring a variety of watercolour and paper textures with ripped edges, inspired by the surreal reflection on the ceiling of the bullring.

Rivets & Washers
Katie Walter

Location: Grand Suite
Layered collage art featuring a variety of paper textures with ripped edges, revealing fragments of text relating to Birmingham's industrial history.

Shopping
Jo McGaffin

Location: Grand Suite
Contemporary fashion collage inspired by the iconic Selfridges & Co. store in the Bullring.



The Library
Tegen Richardson

Location: Grand Suite
Collage inspired by The Library of Birmingham with text relating to the museum's collections and archives:
Boulton and Watt Archives
The Bournville Village Trust Archive
The Charles Parker Archive
The Parker collection of children's books
The Wingate Bett transport ticket collection
The Railway and Canal Historical Society
Library
Sir Benjamin Stone
John Blakemore
Val Williams
Daniel Meadows

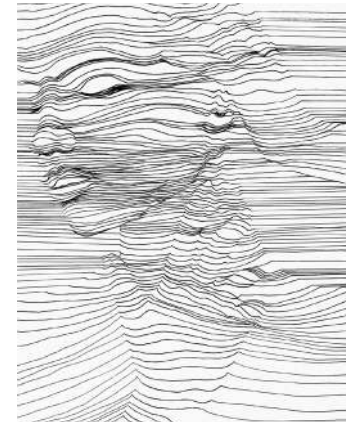
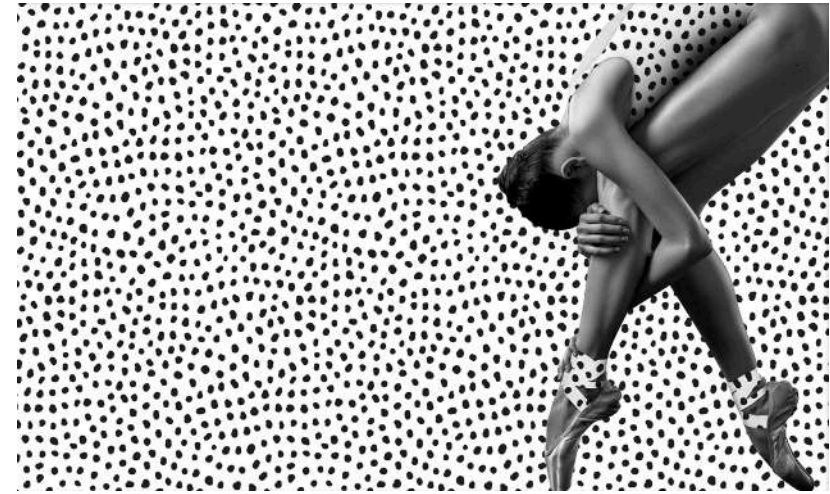
Grand People
Tegen Richardson

Location: Grand Suite
Collage inspired by the architecture of the Grand with text relating to the hotel's history and its famous guests.
Isaac Horton (Original land owner)
Thomson Plevins (Architect)
Arthur Field (Hotel Operator)
Birmingham Electric Light Company
Glamour and Glory Days
King George VI
The Duke of Windsor
Winston Churchill
Charlie Chaplin
James Cagney
Malcolm X
Joe Louis



Pattern Books
Art Story Studio
 Location: Grand Suite
 An abstract artwork created by deconstructing a line drawing of the exterior of The Library of Birmingham.

Going up
Art Story Studio
 Location: Grand Suite
 Minimal textural painting inspired by The Library of Birmingham, view looking downward alongside the glass lift which connects the roof terrace with the main part of the library.
 Text Reads:
 Centenary Square Birmingham
 Culture
 Postmodern
 Francine Houben (Architect)
 Board St.
 Books
 Journal
 Magazine
 Photographs
 Manuscripts

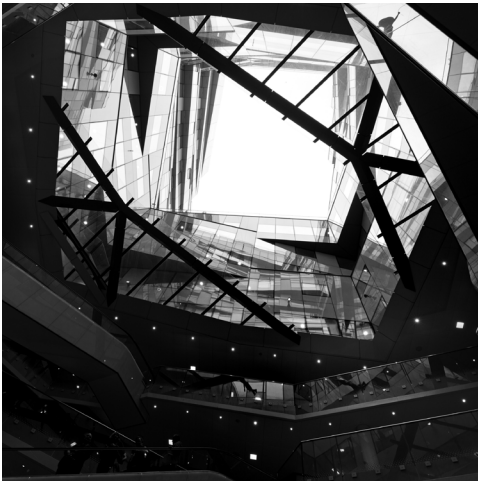


Ballet Points
Art Story Studio
 Location: Grand Suite

Striking minimalist collage of a ballerina, inspired by Birmingham Royal Ballet.

Contouring
Maddy Yeoman
 Location: Penthouse Suite

Bespoke hand illustrated line drawing echoing the delicate contours of a female face and hands.



The Cube
Ian Bramhan

Location: Grand Suite

Photograph of the view looking up the centre of 'The Cube' on Wharfside Street. This 25-storey building is one of Birmingham's most iconic landmarks.

Bramhan said of this photo: 'Architect Ken Shuttleworth has created a wonderful interior - it reminded me of one of those geode rocks you sometimes see for sale in shops where the exterior of the rock gives no clue about the glitzy interior full of jagged, bright crystals.'

Signed & numbered limited edition print (edition of 25).



Library of Birmingham
Ian Bramhan

Location: Grand Suite

Atmospheric photograph of shadows and light projecting the instantly recognisable exterior facade of The Library of Birmingham as an abstract pattern on the floor inside.

Signed & numbered limited edition print (edition of 25).



Linea
Maddy Yeoman

Location: Grand Suite

Bespoke hand illustration of a model with graphic black lines and heavy shadows to create a dramatic portrait.



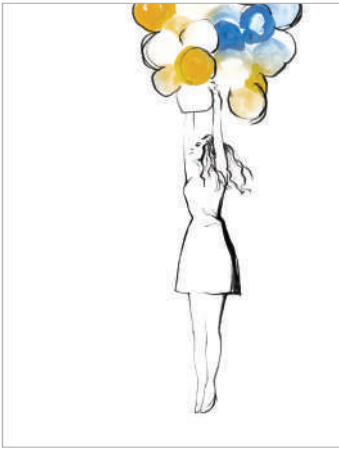
Floating through the Square
Art Story Studio

Location: Grand Suite
Surreal minimal photographic montage of floating pink spheres in Victoria Square, Birmingham.



Day Dreaming I & II
Art Story Studio

Location: Penthouse Suite
Two limited edition giclée prints of a surreal minimal digital collage of a reclining women.



Up, Up & Away I, II & III
Soyoung Kim

Location: Grand Bedroom
A set of 3 Limited edition giclée print of original watercolour whimsical fashion illustrations.

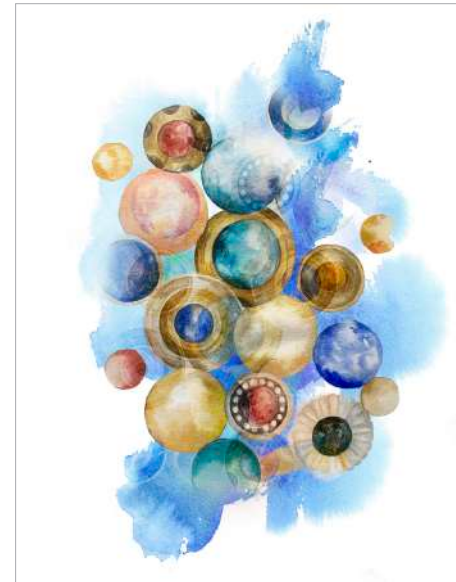


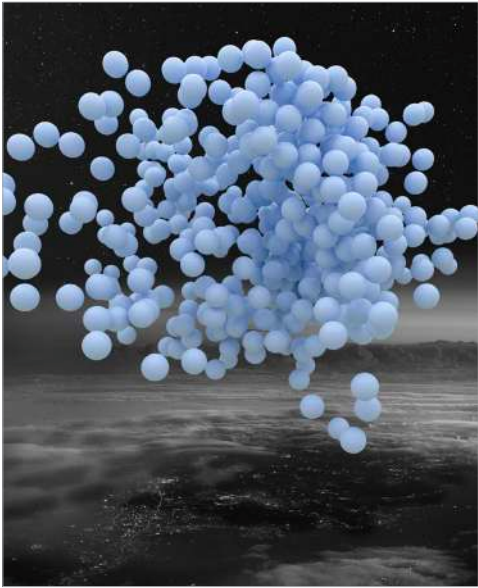
The Mini
Soyoung Kim

Location: Grand Bedroom
Limited edition giclée print of an original illustration of a classic Mini in watercolour and pen. This painting references Birmingham's history with the Mini, which was produced at the Longbridge site from 1959-2000.

Buttons
Soyoung Kim

Location: Grand Bedroom
Limited edition giclée print of soft watercolour artwork of buttons, which were once Birmingham's stock-in-trade.





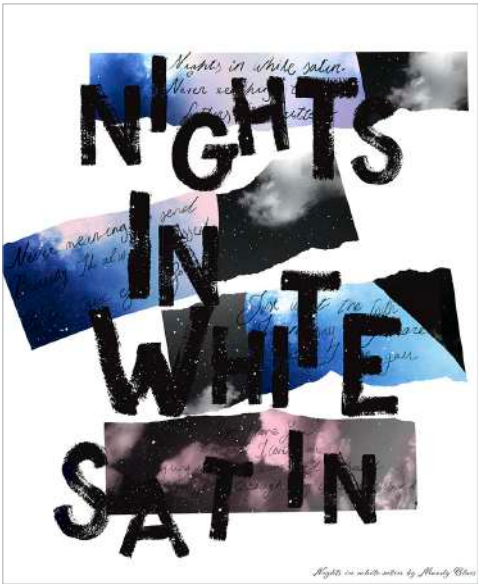
Blue Cloud
Art Story Studio

Location: Grand Bedroom
Limited edition giclée print of surreal minimal photographic montage of floating blue spheres above with city lights down below.

Nights In
Art Story Studio

Location: Grand Bedroom
Digital collage with a famous song title & Lyrics from 'Nights in White Satin' by Birmingham band, The Moody Blues.

Songwriters: Hayward David Justin
Nights in White Satin (The Night) lyrics
© Tyler Music Ltd. C/o Essex Music Int. Ltd., Tyler Music Ltd., Ilfaend Ltd.



Ozzy, Mike & Robert
Mel Skellon

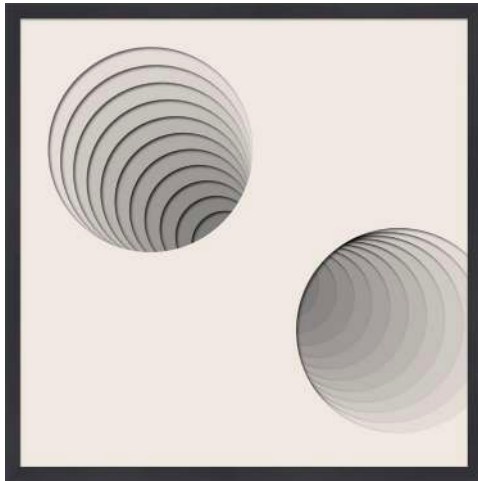
Location: Grand Bedroom
A cluster of 3 Contemporary single line drawings of local Birmingham music artists with an unexpected twist: the 'lines' of the sketch are actually headphone and audio cables.

Ozzy Osborne, Black Sabbath - lead vocalist, Birmingham born & raised.

Mike Skinner, The Streets - Lead vocalist, grew up in Birmingham.

Robert Plant, Led Zeppelin - Lead vocalist, Birmingham based band.





Tunnel

Art Story Studio

Location: Penthouse Suite
 Optical Illusion artwork Inspired by the architectural structure of the original New Street Station in Birmingham. The depth and shadow has been created by layering cut mountcard in tonal variations of warm grey.

Cubed

Art Story Studio

Location: Penthouse Suite
 Optical Illusion artwork, printed onto glass to give added depth and shadows inspired by the view looking up the centre of the 16 storey Cube building in Birmingham.

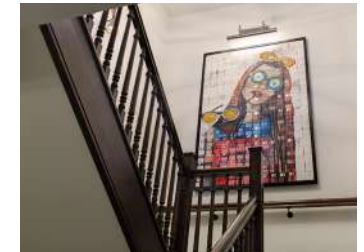


Diskette

Karolina Skowronska

Location: Penthouse Suite

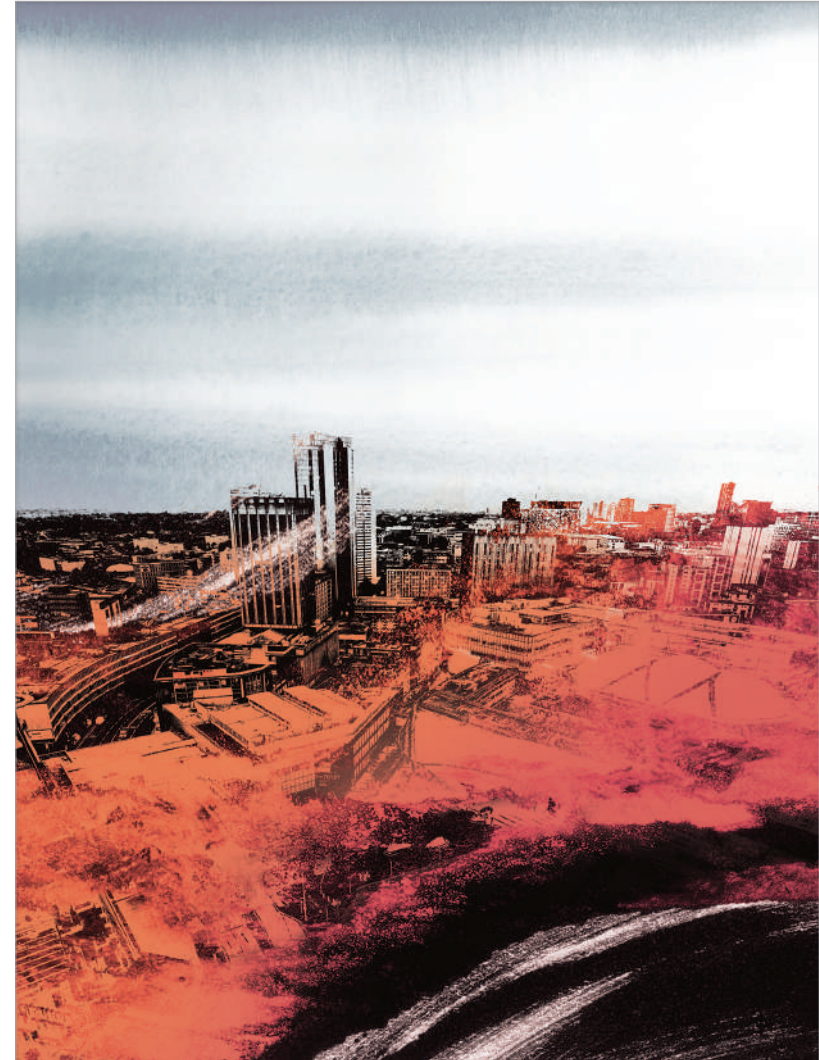
Original artwork made up of layers of floppy discs and CDs that make up the fashion model portrait. The disks are labelled and annotated with names of the notable residents of the city, Birmingham's inventors and their achievements.





Navigations I, II & III
Art Story Studio

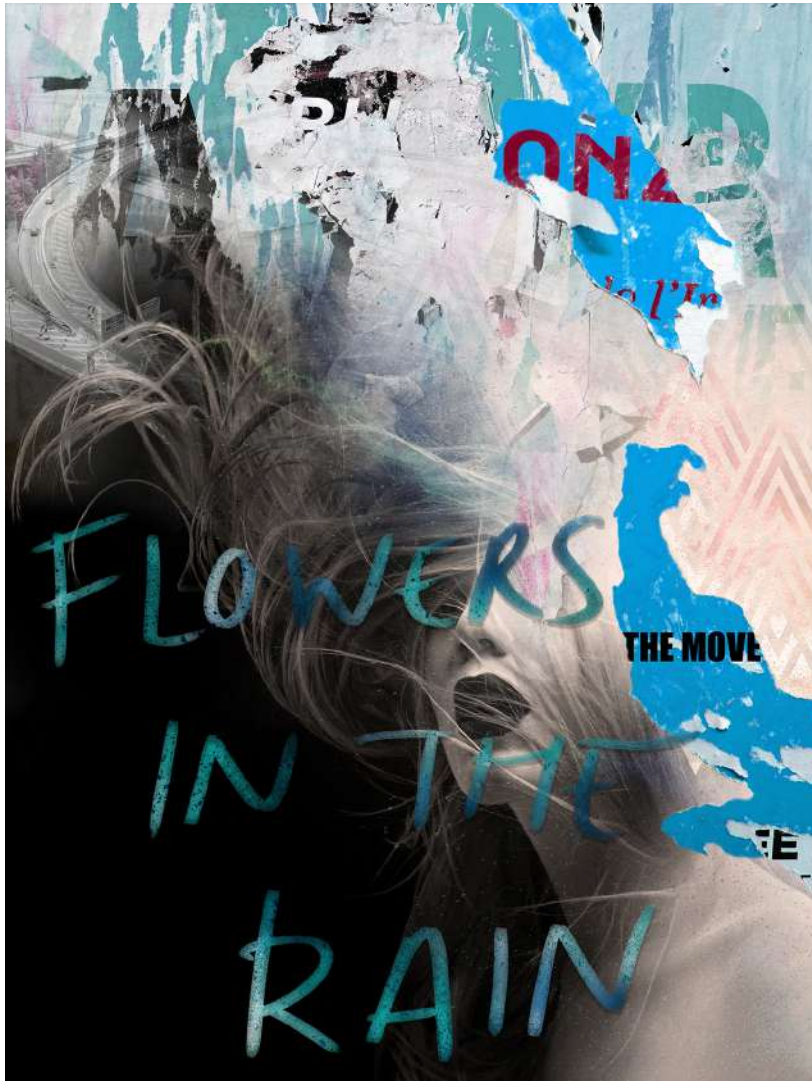
Location: Grand Deluxe Suite
A cluster of 3 abstract and contemporary artworks inspired by the local canal network and the waterways. These pieces feature hand painted brushstrokes which accentuate the fluidity of the water.



Overview
Art Story Studio

Location: Grand Deluxe Suite

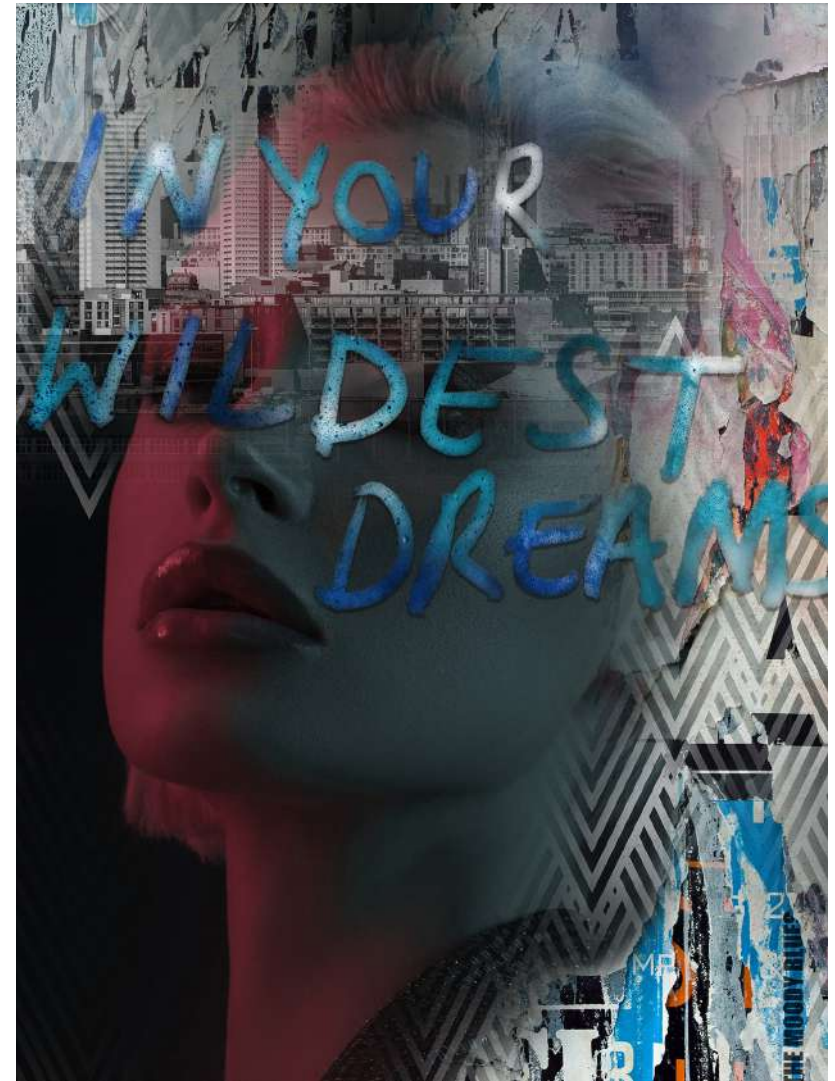
Contemporary interpretation of the Birmingham skyline collaged with abstract paint textures.



Flowers in the Rain
Art Story Studio

Location: Grand Deluxe Suite
 Digital artwork featuring fashion portrait
 photography collaged with a famous song title
 'Flowers in the Rain' by Birmingham band,
 The Move.

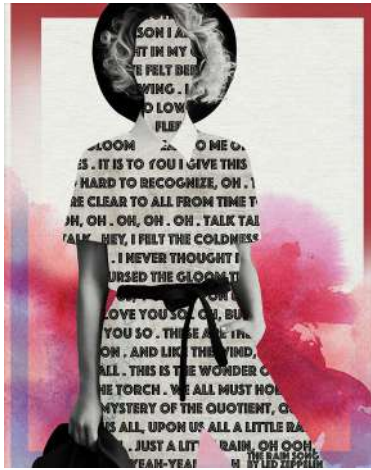
Songwriter: Roy Wood
 Flowers in the Rain Lyrics © T.R.O. INC.



Your Wildest Dreams
Art Story Studio

Location: Grand Deluxe Suite
 Digital artwork featuring fashion portrait
 photography collaged with urban photography of
 Birmingham & a famous song title
 'Your Wildest Dreams' by Birmingham band,
 The Moody Blues.

Songwriter: Hayward Justin
 Your Wildest Dreams Lyrics © Nightswood Bv



**Dry Your Eyes
Art Story Studio**

Location: Grand Suite
Bathroom
Fashion & music inspired collage including song references from Birmingham band, The Streets. Lyrics from 'Dry Your Eyes'.
Songwriters: Skinner Michael Geoffrey
Dry Your Eyes lyrics © Universal Music Publishing Pgm Ltd.

**The Rain Song
Art Story Studio**

Location: Guestroom
Bathroom
Fashion & music inspired collage including song references from Birmingham band, Led Zeppelin. Lyrics from 'The Rain Song'.
Songwriters: Jimmy Page / Robert Plant
The Rain Song lyrics © Warner Chappell Music, Inc.

**Don't Bring Me Down
Art Story Studio**

Location: Penthouse
Suite bathroom
Fashion & music inspired collage including song references from Birmingham band, Electric Light Orchestra. Lyrics from 'Don't Bring Me Down'.
Songwriters: Jeff Lynne
Don't Bring Me Down lyrics © Sony/ATV Music Publishing LLC.

**Come on Eileen
Art Story Studio**

Location: Guestroom
Bathroom
Fashion & music inspired collage including song references from Birmingham band, Dexys Midnight Runners. Lyrics from 'Come on Eileen'.
Songwriters: James Mitchell Paterson / Kevin Adams / Kevin Antony Rowland
Come On Eileen lyrics © EMI Music Publishing Ltd, Rabasse Music, Ltd.

**Come Undone
Art Story Studio**

Location: Guestroom
Bathroom
Fashion & music inspired collage including song references from Birmingham band, Duran Duran. Lyrics from 'Come Undone'.
Songwriters: John Taylor / Simon Le Bon / Nick Rhodes / Warren Cuccurullo
Come Undone lyrics © Private Parts Music, Skintrade Music Ltd

**Mirror In the Bathroom
Art Story Studio**

Location: Guestroom
Bathroom
Fashion & music inspired collage including song references from Birmingham band, The Beat. Lyrics from 'Mirror in the Bathroom'.
Songwriters: David Steele / Everett Morton / David Wakeling / Andy Cox / Roger Charley
Mirror In The Bathroom lyrics © London Music (gb 1), Beat Brothers Ltd

**Keep on Running
Art Story Studio**

Location: Penthouse
Suite bathroom
Fashion & music inspired collage including song references from Birmingham band, The Spencer Davis Group. Lyrics from 'Keep on Running'.
Songwriters: Edwards Jackie
Keep on Running lyrics © Island Music Ltd.

**Pink Moon
Art Story Studio**

Location: Grand Suite
Bathroom
Fashion & music inspired collage including song references from Birmingham artist, Nick Drake. Lyrics from 'Pink Moon'.
Songwriters: Nick Drake
Pink Moon lyrics © BMG Rights Management, Reservoir Media Management Inc.



MADELEINE





Looking up

Karolina Skowronska

Location: Madeleine salon

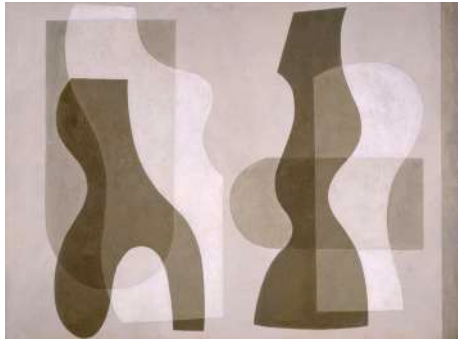
Abstract original framed canvas. The composition of this painting is inspired by the strong architectural shapes found in the hotel, particularly the arches and ceiling roses in the Grand Ballroom.



Kahn & Bell
Art Story Studio
 Location: Madeleine bar
 Kahn & Bell was a fashion label and boutique founded by Jane Kahn and Patti Bell in 1976, located on Hurst Street, Birmingham. They designed clothes for some of the most popular bands during the 80's including Duran Duran and Shock.

Superimposed Forms, 1938
Jessica Dismorr
 Location: Madeleine bar
 Painting from Birmingham Museum and Art Gallery archive. Photo credit: Birmingham Museums Trust.

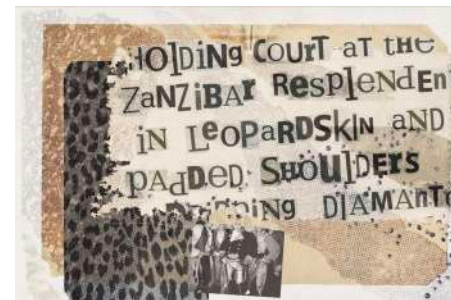
Untitled
Betsy Bradley
 Location: Madeleine bar
 Betsy has an MA in Fine Art from Birmingham School of Art. She exhibited at the Ikon Gallery 2019 as one of Birmingham's emerging new art talents.



Life Drawing
Brigitte Thomas
 Location: Madeleine bar
 Figurative sketch by a local artist. Brigitte is part of Gallery 12, a group of artists working in Birmingham and the Midlands.

Teal, Lemon & White
Art Story Studio
 Location: Madeleine bar
 Bold, expressive original abstract canvas in shades of teal with white & lemon pops of colour.

Zanzibar resplendent
Art Story Studio
 Location: Madeleine bar
 Mixed media artwork inspired by New Romantic fashion label, Kahn & Bell.



"Kahn and Bell had particular impact. Holding court at the Zanzibar, resplendent in leopardskin and padded shoulders, dripping diamanté with leather devils' tails hanging down between their legs, they looked on good nights like Egyptian Queens, like Ancient Babylonians." Blueprint, 1988.



Sitting Nude
Mash UK
 Location: Madeleine columns
 Sketch drawing of a sitting female nude.

The Dome Council
Art Story Studio
 Location: Madeleine columns
 Abstract Painting of domes on Birmingham City Council House.

Rotunda
Mustograph agency
 Location: Madeleine columns
 Photograph From Mary Evans
 Picture Library - The Rotunda and St. Martin's Circus in Birmingham, May 1966.



Student Photographer
Henry Grant
 Location: Madeleine columns
 Photograph From Mary Evans
 Picture Library - A photographer sets up her equipment at Birmingham University, 1950s.

Flats
Henry Grant
 Location: Madeleine columns
 Photograph From Mary Evans
 Picture Library - A block of flats with a children's play area in the foreground, 1968.

The Custard Factory
Art Story Studio
 Location: Madeleine columns
 Abstract Painting of The Custard Factory in Gibb Street, Digbeth, Birmingham.

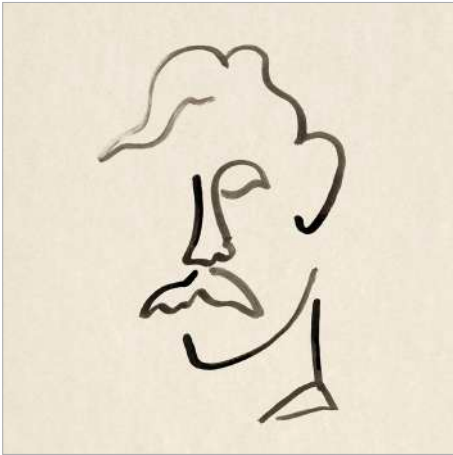




Fashion Students
John Gay
 Location: Madeleine columns
 Photograph From Mary Evans
 Picture Library - Students working in
 the Department of Fashion & Textiles at
 Birmingham College of Art & Design,
 1967.

Tolkien
Art Story Studio
 Location: Madeleine columns
 An minimalist abstract Portrait of
 J. R. R. Tolkien.

Street Scene
Mustograph Agency
 Location: Madeleine columns
 Photograph From Mary Evans
 Picture Library - A busy scene at
 Birmingham's Bull Ring complex,
 May 1966.



Sleeping
Martha Davies
 Location: Madeleine columns
 Charcoal sketch drawing of a sleeping
 women.

Fashion Design
John Gay
 Location: Madeleine columns
 Photograph From Mary Evans
 Picture Library - Students in the fashion
 studio at Birmingham College of Art &
 Design, 1967

Stairwell
Eric de Mare
 Location: Madeleine columns
 Photograph From Mary Evans
 Picture Library - Stairwell at
 Department of Commerce & Social
 Science at University of Birmingham,
 Edgbaston between 1964-1980.





Print Room
John Gay

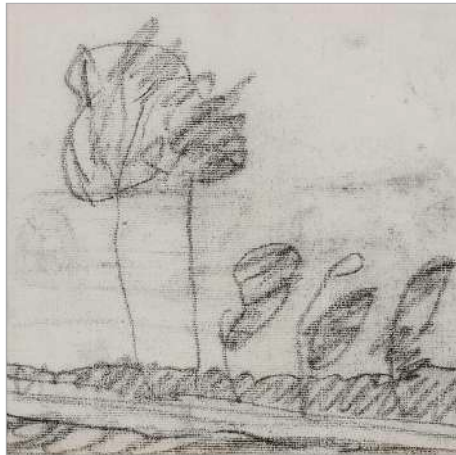
Location: Madeleine columns
Photograph From Mary Evans
Picture Library - Inside the print room
at Birmingham College of Art & Design,
1967.

Seven Trees
Paula Modersohn-Becker

Location: Madeleine columns
Detail from a spontaneous charcoal on
paper landscape drawing.
Credit: The Muriel Kallis Steinberg
Newman Collection, Gift of Muriel Kallis
Newman, 2006.

Curzon Street Station
Art Story Studio

Location: Madeleine columns
Abstract Painting of Curzon Street
Railway Station, Birmingham.



St Martin's
Mustograph Agency

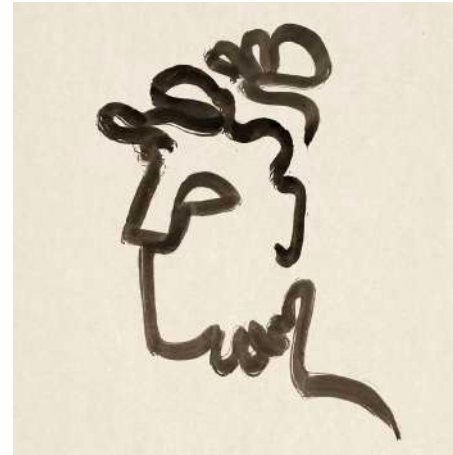
Location: Madeleine columns
Photograph From Mary Evans
Picture Library - St Martin's House,
The Bull Ring, May 1966.

Constance Naden
Art Story Studio

Location: Madeleine columns
Abstract Portrait of Birmingham Poet,
Constance Naden.

Art & Design
John Gay

Location: Madeleine columns
Photograph From Mary Evans
Picture Library - Students screen
printing in the Department of Fashion
& Textiles at Birmingham College of
Art & Design, 1967.





ISAAC'S





Isaac's Framed Artwork Collection
Curated by Art Story Studio

Location: Isaacs restaurant

For the New York style brasserie, the Art Story Studio curated a collection that captures the combination of grit and glamour that characterised New York - and Birmingham - city life in the early to mid-20th century. It numbers more than 50 photographs, both black & white and colour.





MEETINGS & EVENTS

EST  1879



**Snow Hill
Art Story Studio**

Location: Barwick Meeting Room

A collection of frames displaying an image montage of Birmingham, including vintage photography of Snow Hill Station. Barwick Street was constructed in 1870 and several plots of land bounded by Colmore Row, Church Street, Barwick Street and Livery Street were acquired to create the site of the hotel. It is located very close to Snow Hill station. Barwick Street is named after William Barwick Cregoe Colmore, last of the Colmore family.



**Spinning
Art Story Studio**

Location: Cathedral Meeting Room

An abstract original painting on canvas inspired by Lewis Paul & John Wyatt's Spinning Machine which they developed in Birmingham in the mid 1700's.



Steam
Karolina Skowronska

Location: Church Meeting Room

An original abstract painting inspired by John Wyatt's Steam Engine developed in the mid 1700's.



Window into the City
Art Story Studio

Location: Colmore Meeting Room

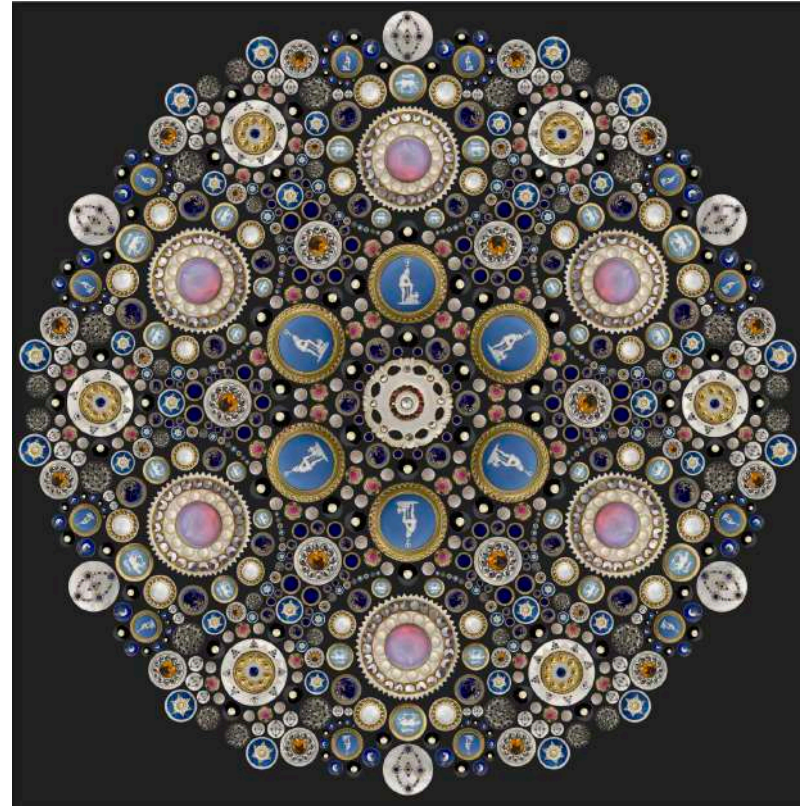
Inspired by St Philips Cathedral which is located on Colmore Row close to the Hotel, a contemporary interpretation of stained glass windows, telling the story of modern Birmingham in a mixed media collage.



Mason Pen Nibs
Art Story Studio

Location: Chamberlain Meeting Room

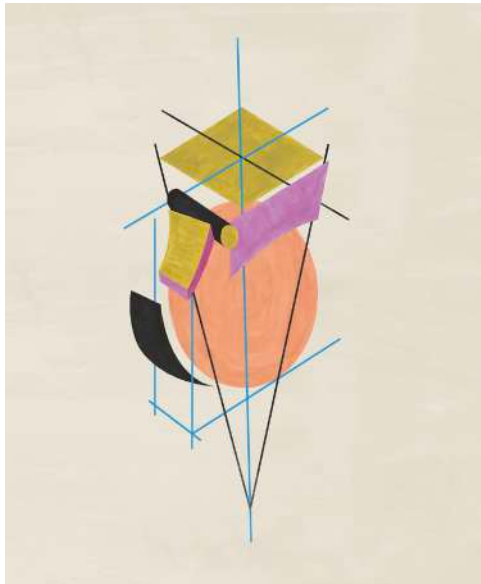
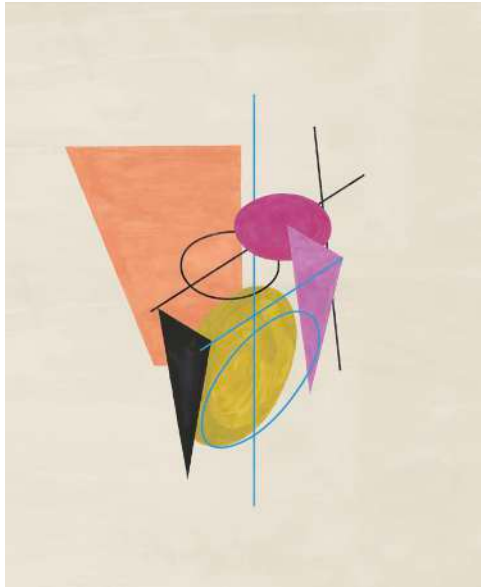
An intricate kaleidoscope comprised of images of pen nibs manufactured by Josiah Mason of Birmingham.



Luckcock Buttons
Art Story Studio

Location: Chamberlain Meeting Room

An intricate kaleidoscope comprised of images of buttons that are part of the Luckcock Collection - a collection of over 500 buttons collected by James Luckcock, a jeweller and button maker in St Paul's Square, Birmingham in the 1780s.



Precious forms I & II
Art Story Studio
 Location: Regent Meeting Room

A pair of artworks that are inspired by one of the city's iconic industries. Located in the jewellery quarter, Regent Place is the address of Deakin & Francis, the UK's oldest family run jeweller, using master craftspeople to create jewellery by hand. They are suppliers of Tiffany and Asprey.



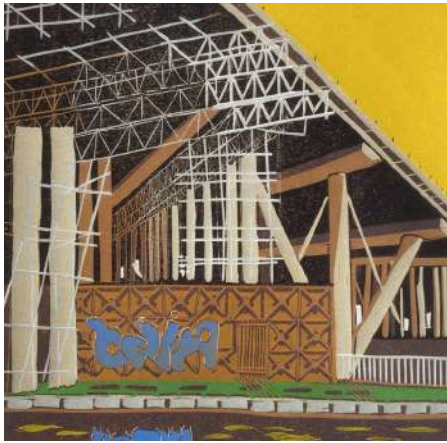
Adornment I & II
Art Story Studio
 Location: Albion Meeting Room

Albion Street is located in the jewellery quarter, with a history of design and manufacture. This pair of artworks are inspired by the merging worlds of jewellery and fashion.



Cherry Orchards I & II, III, & IV
Karolina Skowronska
Location: Temple Meeting Room

Four original abstract paintings on canvas that are inspired by cherry orchards. Temple Street & Temple Row (2 minutes walk from the hotel) were created in 1715 and are built on cherry orchards that once stood in the city centre.



**Motorway repairs
Andy Tromans**

Location: Breakout Space

A reduction linocut print featuring the repairs undertaken to the M6 motorway flyover as seen from the towpath of the canal beneath.

**Canal Path
Andy Tromans**

Location: Breakout Space

A reduction linocut print. Andy is a painter and printmaker working in the industrial West Midlands. He is a member of the Birmingham Art Circle. Much of his influence is drawn from his surroundings.

**Kinver Canal
Andy Tromans**

Location: Breakout Space

A reduction linocut print, the inspiration for this print came from a visit to Kinver on a sketching trip.

**Broken Roofs
Andy Tromans**

Location: Breakout Space

This reduction linocut print is of a local disused glassworks. Nature has begun to reestablish itself though the broken roofs of the work places giving the site a feeling of lost grandeur.



**Malcolm X
Art Story Studio**

Location: Meeting Rooms Breakout Space

In 1965 international civil rights campaigner Malcolm X visited the hotel on his visit to Birmingham to give a powerful speech addressing the issues surrounding the treatment of black and Asian workers and their families at the time.



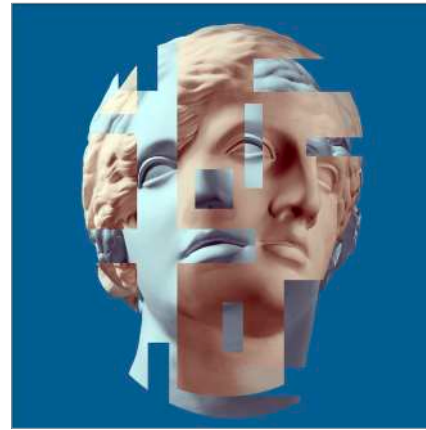
Where is the Dog?
Image Source
 Location: Meeting Rooms Corridor
 Quirky, light-hearted, surrealist
 photography with retro undertones.

Timeless Beauty
Lambada
 Location: Meeting Rooms Corridor
 Photographic collage portrait of a
 women combined with a plaster head
 of Aphrodite.



Head in the Clouds
Francescoch
 Location: Meeting Rooms Corridor
 Surrealist portrait artwork of a figure
 whose face has been replaced by
 clouds.

Venus
Bashta
 Location: Meeting Rooms Corridor
 A contemporary photographic collage
 of a Venus bust.



Resting Women
Vizerskaya
 Location: Meeting Rooms Corridor
 Atmospheric fashion photograph of a
 women asleep in a misty forest.





Untitled
Drew Platt
Location: Breakout Space
An Abstract artist based in Birmingham, Drew is 'Inspired mostly by the ghosts of industry around my home town, places most dear to me and the feelings they Invoke.'

Ludgate Hill Bridge, Birmingham & Fazelly Canal.
Paul Hipkiss
Location: Breakout Space
Limited edition print. Printmaker Paul Hipkiss was best known for his work inspired by the industrial environment around his home in the Black County.

Grate
Tom Hicks
Location: Breakout Space
Finding beauty in urban decay, this striking photo is from Hicks's street photography project 'Brumtype'.

Yellow No
Tom Hicks
Location: Breakout Space
Also from Hicks's street photography project 'Brumtype' capturing typography and street graphics found in Birmingham.



Name of Artwork
Lynn Jeffery
Location: Breakout Space
Birmingham Art Circle President, Lynn Jeffery specialises in photo-silk screen printing.

Station Detail
Lynn Jeffery
Location: Breakout Space
Giclée print of a detail from 'Reflections from Snow Hill Station' original Screen print.

Reflections from Snowhill Station
Lynn Jeffery
Location: Breakout Space
Limited Edition photo-silk screen print.

Out of the Window
Lynn Jeffery
Location: Breakout Space
Limited Edition photo-silk screen print.

ACKNOWLEDGMENTS

This brochure was created specially for The Grand Hotel Birmingham. All rights reserved.

Special thanks to Alison Chapman and Harry Pass at Art Story, a division of Elegant Clutter; and, of course, to all of the artists whose work is featured here and to the team at Art Story Studio.

Interiors photography is reproduced by kind permission of: Paul Raefield (pages 6, 84); Tom Mannion (pages, 4, 5, 100); Richard Bryant (page 5, above) and Peter Jackson (pages 58, 96).



GRAND HOTEL

BIRMINGHAM



Birmingham's original Grand Hotel, restored to glory: from gorgeously comfortable bedrooms and suites to the spectacular Grand Ballroom and Madeleine cocktail and Champagne bar.

THE GRAND HOTEL BIRMINGHAM, COLMORE ROW, BIRMINGHAM B3 2BS TEL: +44 (0)121 827 9600

THEGRANDHOTELBIRMINGHAM.CO.UK HELLO@GRANDBIRMINGHAM.CO.UK