

A woman with long, wavy blonde hair, wearing a red, backless, pleated dress, is seated in a dark, ornate hotel lobby. She is looking back over her shoulder towards the camera. The room features dark wood paneling, several framed artworks on the wall, and a chandelier. In the foreground, a small round table holds a glass of champagne and a rolled-up document. The overall atmosphere is elegant and sophisticated.

GRAND HOTEL
BIRMINGHAM

EST  1879

CONTENTS

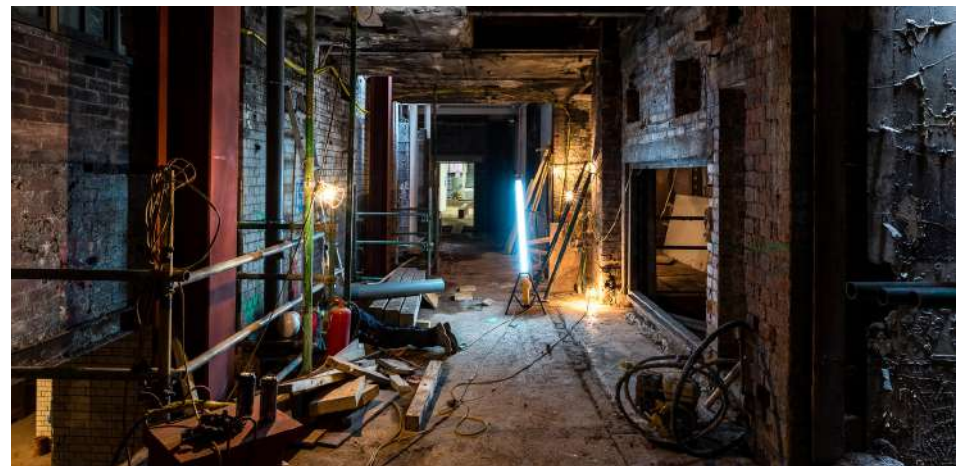
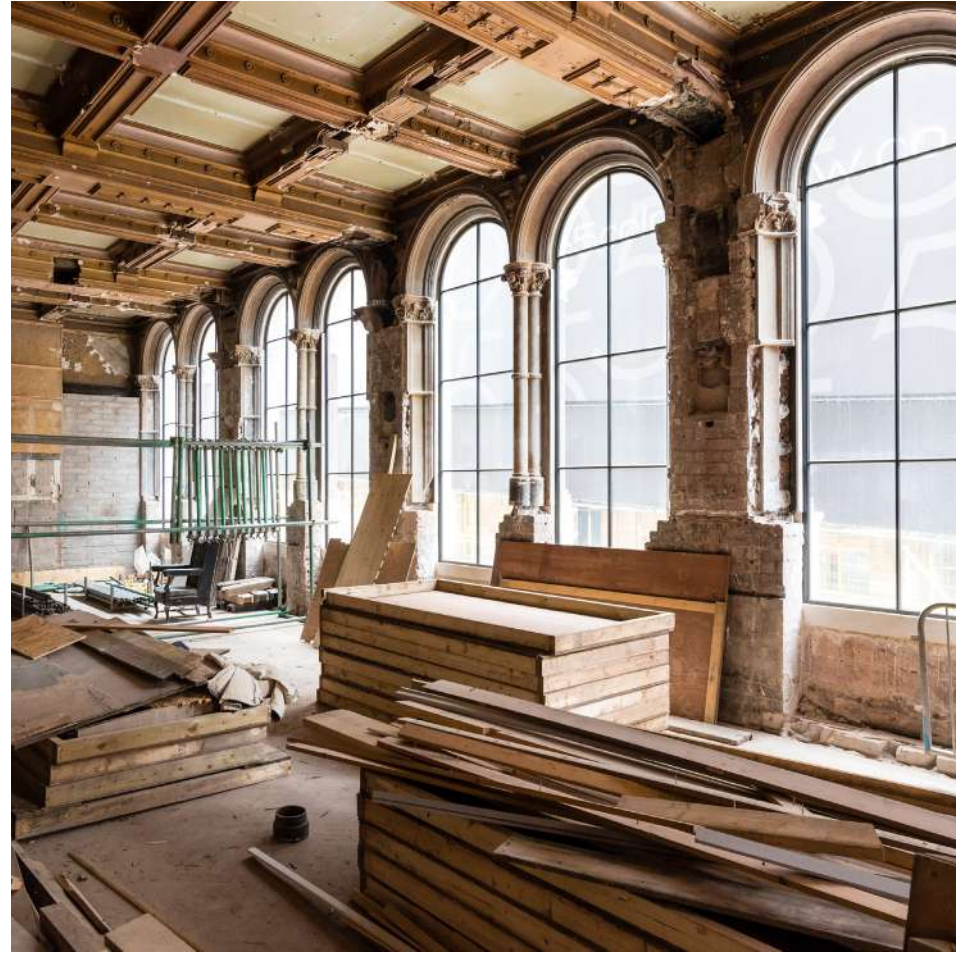
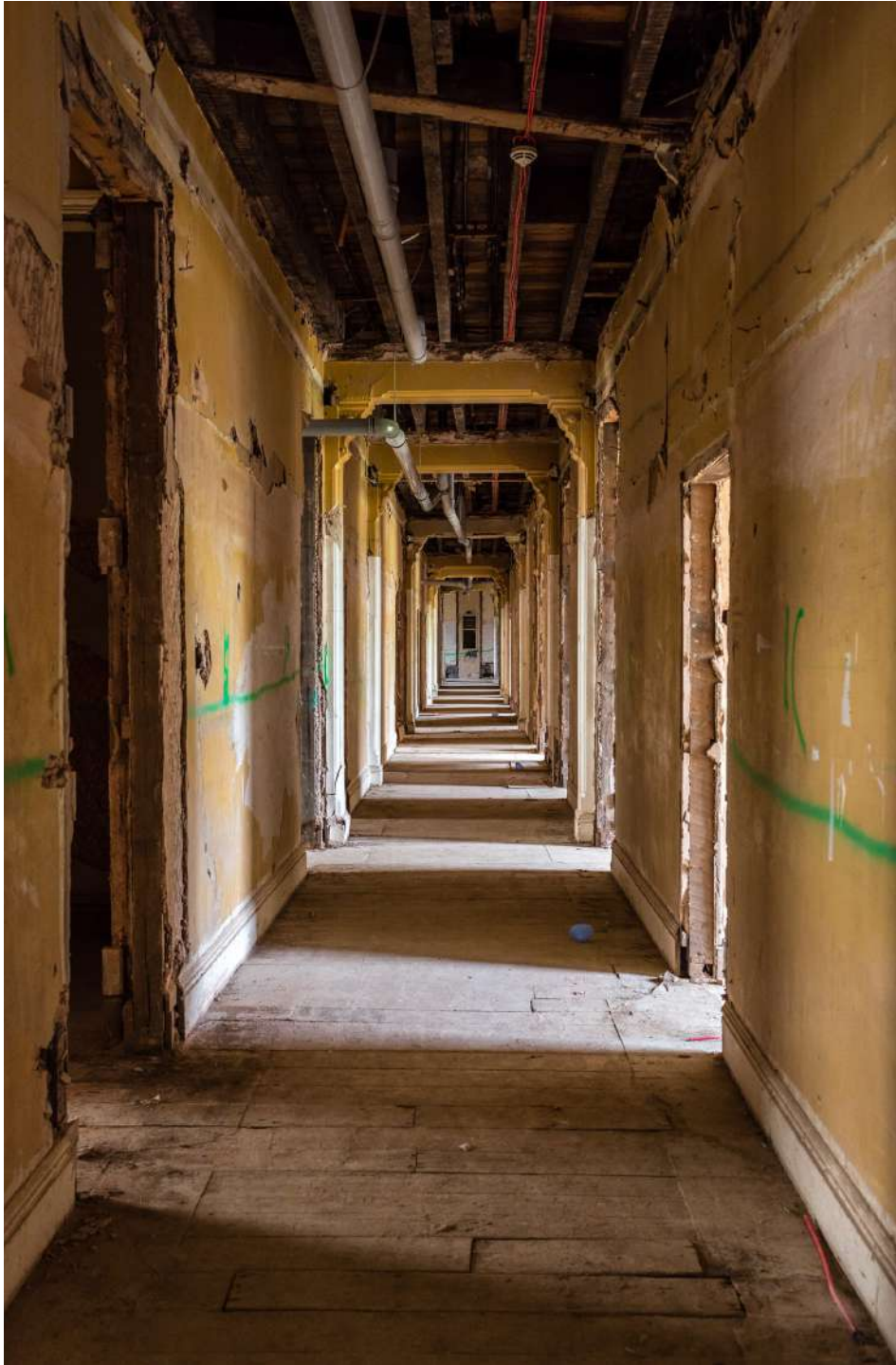
WELCOME	03
BEDROOMS & SUITES	09
PENTHOUSE SUITE	13
MADELEINE	17
ISAAC'S	21
GRAND BALLROOM	25
MEETINGS & EVENTS	29

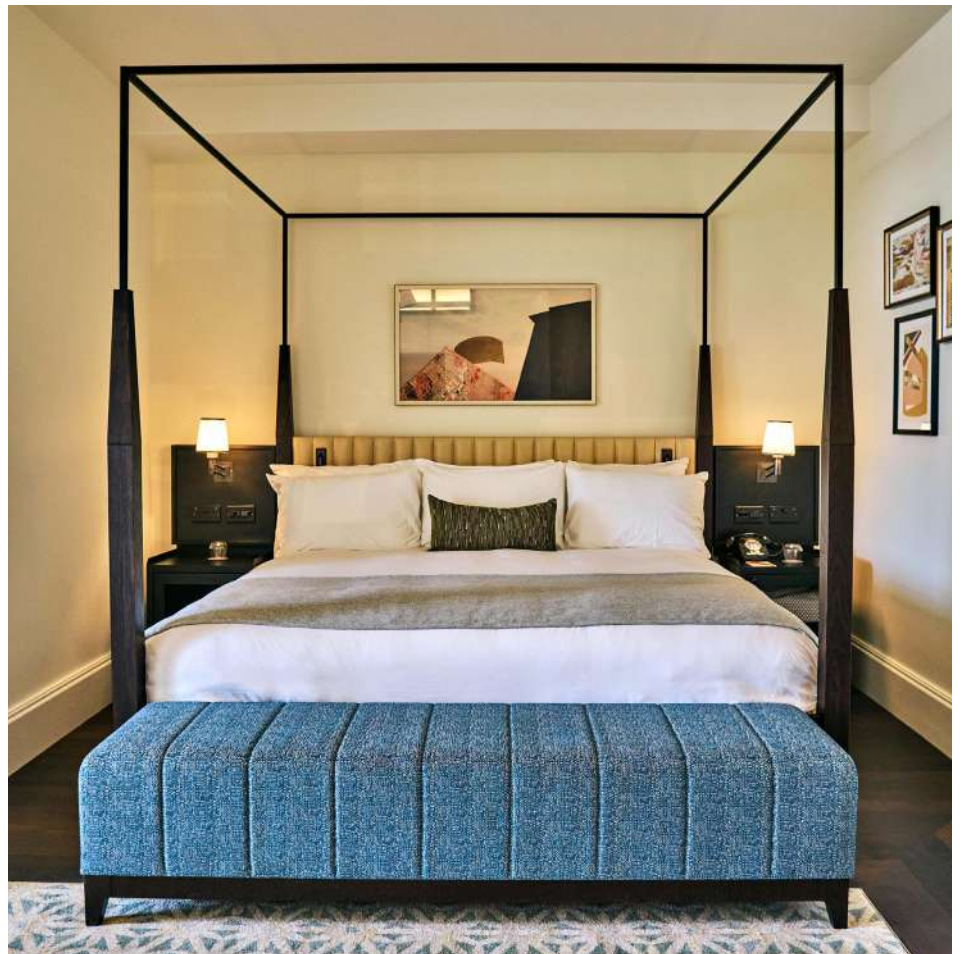
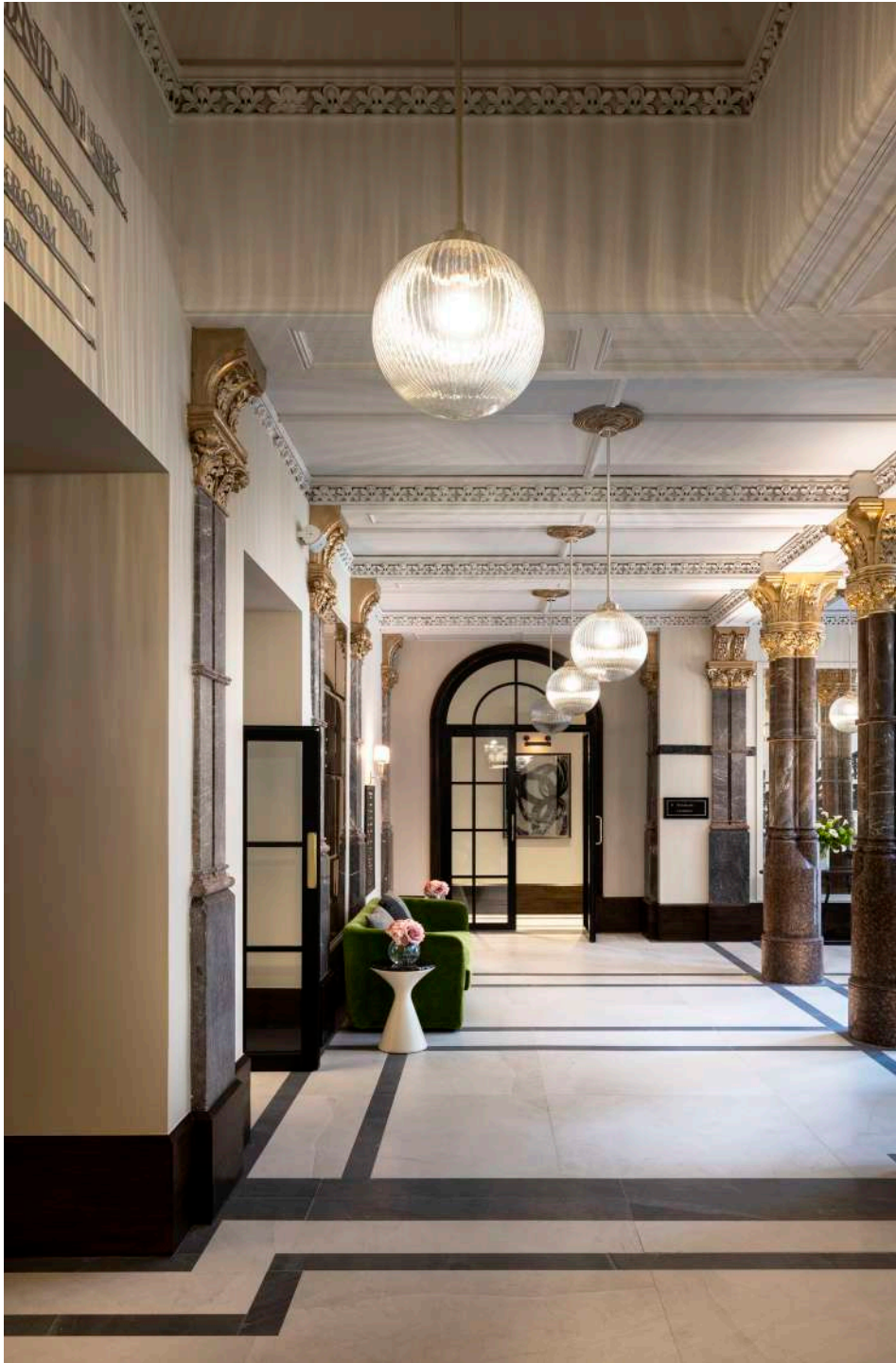


ISAAC HORTON'S VISION FOR A
GRAND HOTEL IN BIRMINGHAM
TO RIVAL THOSE IN LONDON
FIRST OPENED IN 1879 TO
DESIGNS BY THOMSON PLEVINS.
THE GRAND BOASTED 100
BEDROOMS, A RESTAURANT ON
CHURCH STREET, STOCK ROOMS
“AND EVERY CONVENIENCE
FOR COMMERCIAL MEN.” THE
HOTEL WAS EXTENDED IN
1894 TO INCLUDE THE GRAND
BALLROOM, AND IN ITS HEYDAY
IT WELCOMED ROYALTY AND
ROCK STARS.



The Grand Hotel closed in 2002 and the building was listed in 2004. Restoration of the exterior was undertaken in 2012, but the interior remained semi-derelict for another five years. The top-to-toe interior refurbishment has restored original features to grandeur.







“A THOROUGHLY SEXY
REWORKING OF THE
OLD TROUPER”

MARINA O'LOUGHLIN, SUNDAY TIMES





BEDROOMS & SUITES

FROM GRAND DOUBLE AND GRAND TWIN ROOMS TO FABULOUS SUITES, THERE'S HOTEL ACCOMMODATION FOR EVERY OCCASION.

All of them have been beautifully designed with meticulous attention to detail and luxurious touches from 300-thread-count bedlinen, hand-sprung mattresses and fluffy bathrobes to smart HDTVs, Nespresso machines, rain showers, and complimentary tea, coffee and mineral water. You'll receive a Grand welcome and warm, friendly service throughout your stay: nothing is too much trouble.

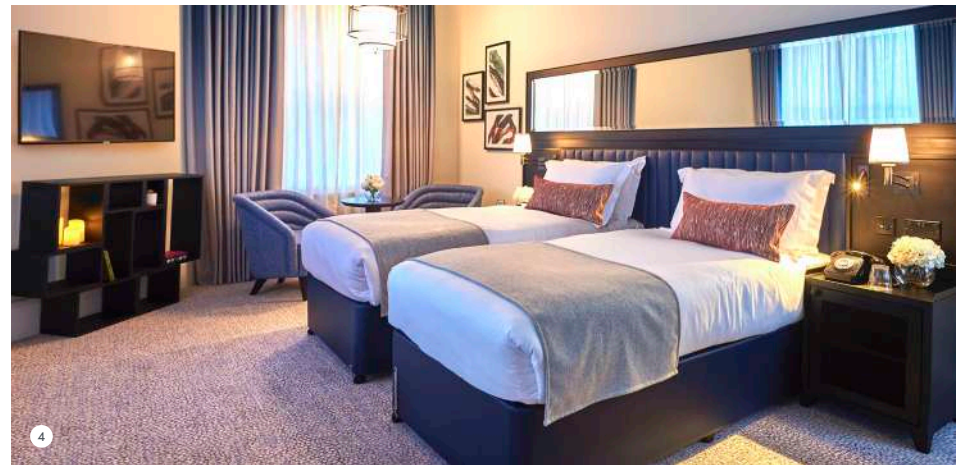
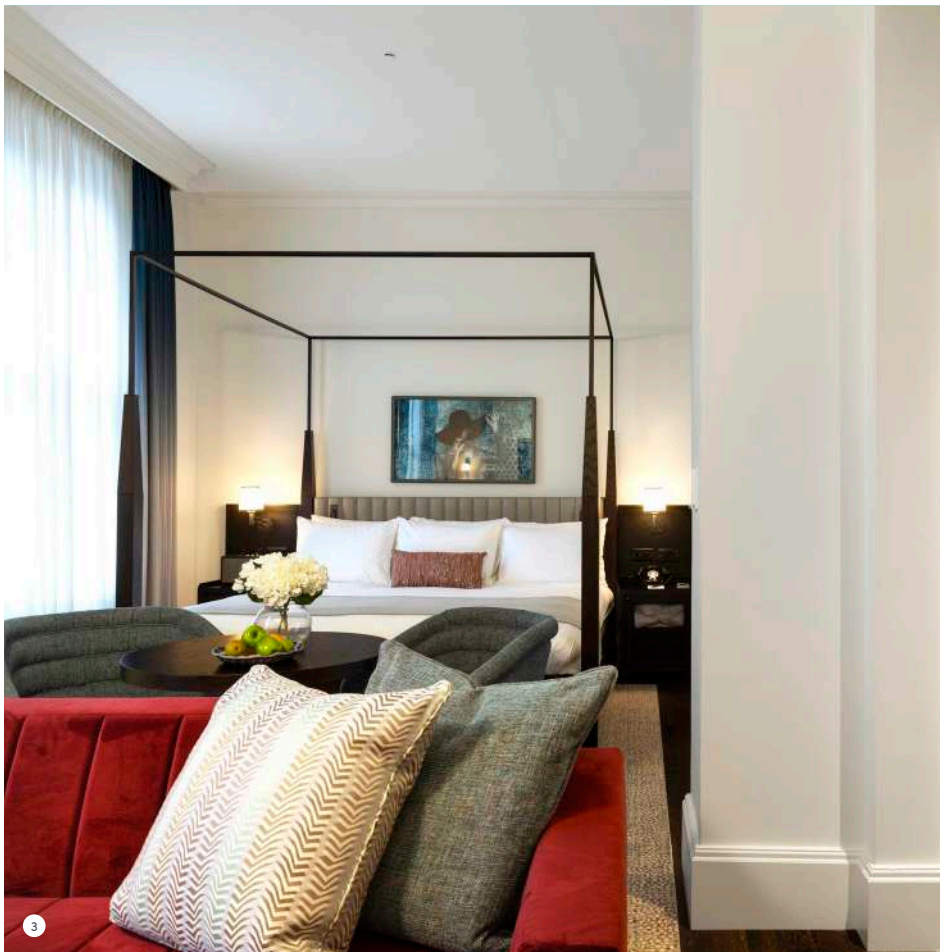


- 1 Grand Suite
- 2 Grand Double
- 3 Grand Junior Suite
- 4 Grand Deluxe Twin



“WARM, FRIENDLY AND WORTHY OF A GOLD STAR”

SUNDAY TIMES BEST PLACES TO STAY 2021: BEST HOTEL, CENTRAL ENGLAND



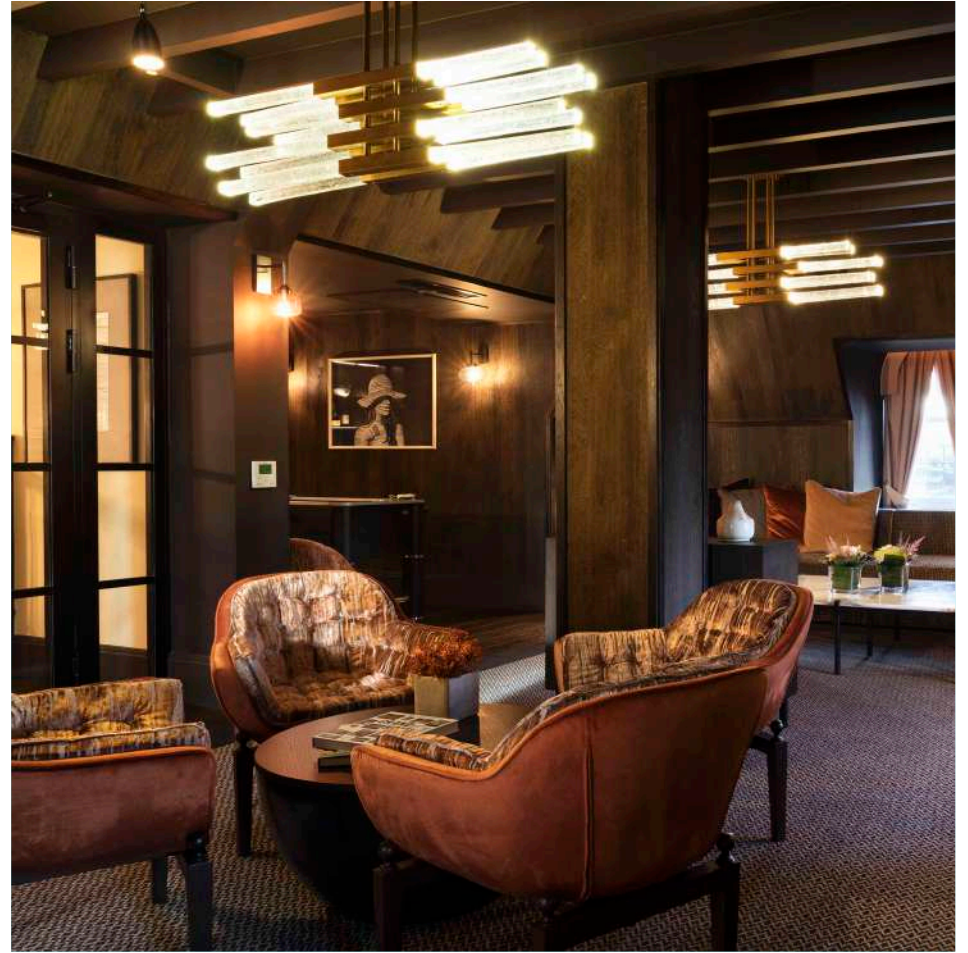


PENTHOUSE SUITE

WELCOME TO A WORLD OF EXCLUSIVE LUXURY.

This jaw-dropping, 1,450 sq ft (135 sq m) duplex suite comes with its own bar (stocked to your liking), open-plan dining- and living-room, table football, walk-in wardrobe, and luxurious marble bathroom. Secure and discreet, it can be combined with the adjacent Grand Suite to create a private, two-bedroom "apartment"





“MORE MANHATTAN THAN MIDLANDS”

SUSAN D'ARCY, SUNDAY TIMES TRAVEL



MADELEINE

FOLLOWING THE TRADITION OF GRAND HOTELS WITH LUXURIOUS COCKTAIL BARS.

Madeleine's double-height windows, sparkling chandeliers, and rich soft furnishings make it at once super-glamorous and utterly enticing.

Bringing a slice of Parisian chic to the heart of Birmingham, Madeleine serves Champagne, cocktails and bar snacks that take their cue from France with a nod to the West Midlands as well as Madeleine's signature afternoon tea.

We think that once you are sat at your table, sipping a cocktail or a glass of Champagne, you won't want to leave – and who can blame you?



“LOVELY STAFF, MOODY COCKTAIL
BAR AND BUZZY BRASSERIE”

MARINA O'LOUGHLIN, SUNDAY TIMES STYLE

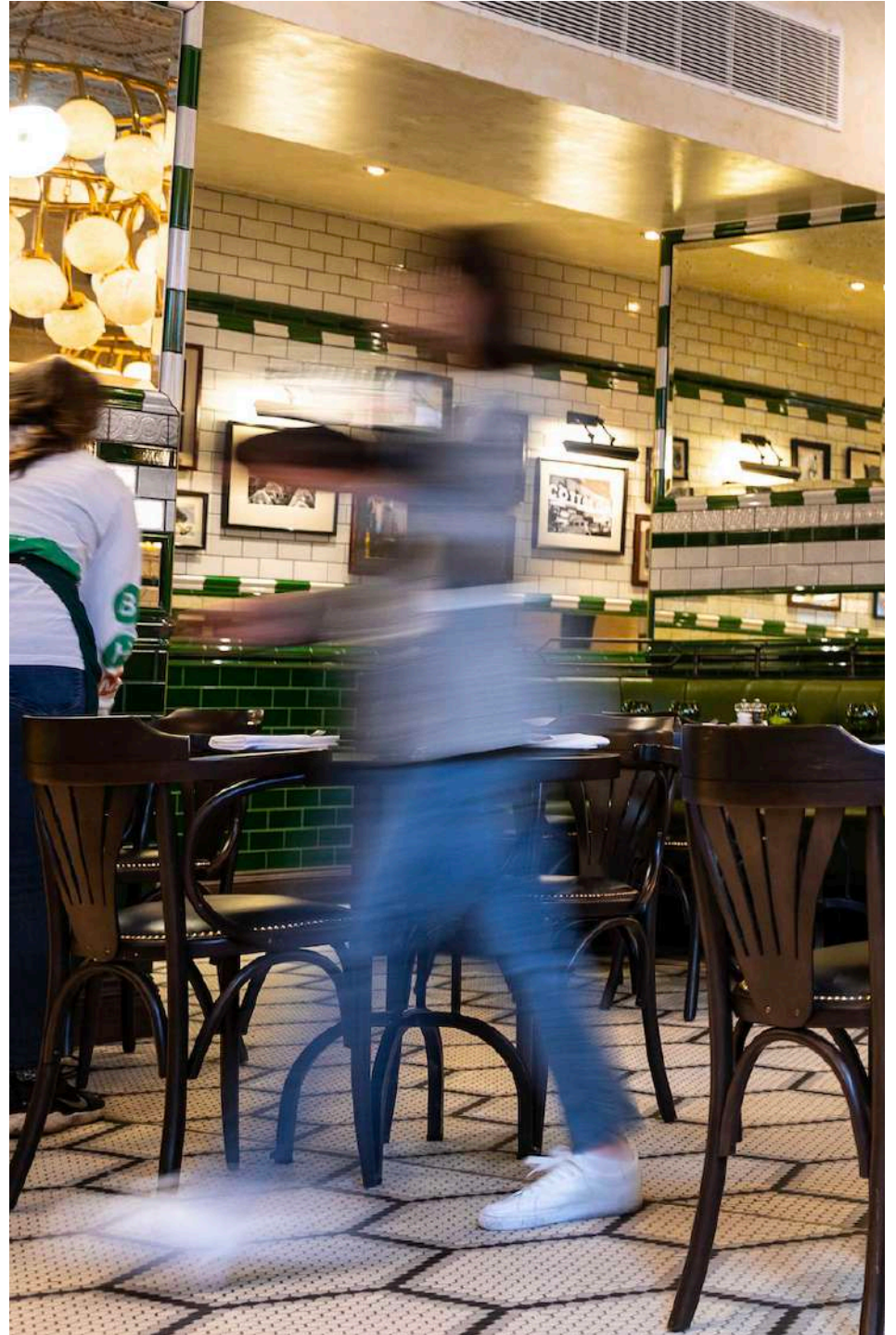




ISAAC'S

INSPIRED BY NEW YORK, 100 PER CENT BRUM.

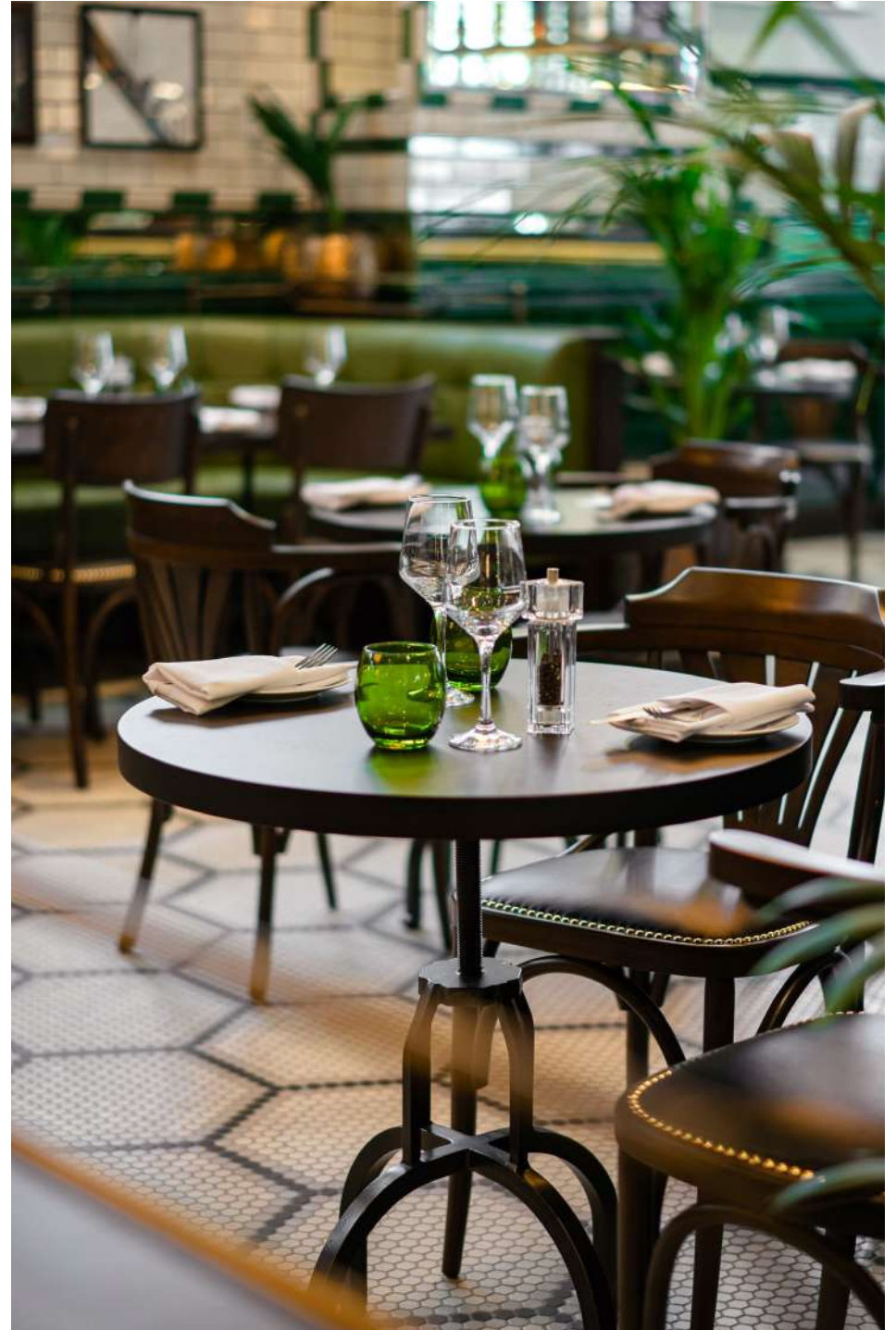
Isaac's menu features American comfort food such as hot dogs, Caesar salad, cornbread, and cheesecake alongside brasserie classics including tuna tartare, seafood platter, and 30-day aged steaks. Dial things up for a blow-out occasion or dress down for casual dining: the choice is yours.





“AS GOOD AS ANYWHERE
IN THE CITY... SO MUCH
TO CELEBRATE”

SIMON CARLO, MEAT & ONE VEG





THE GRAND BALLROOM

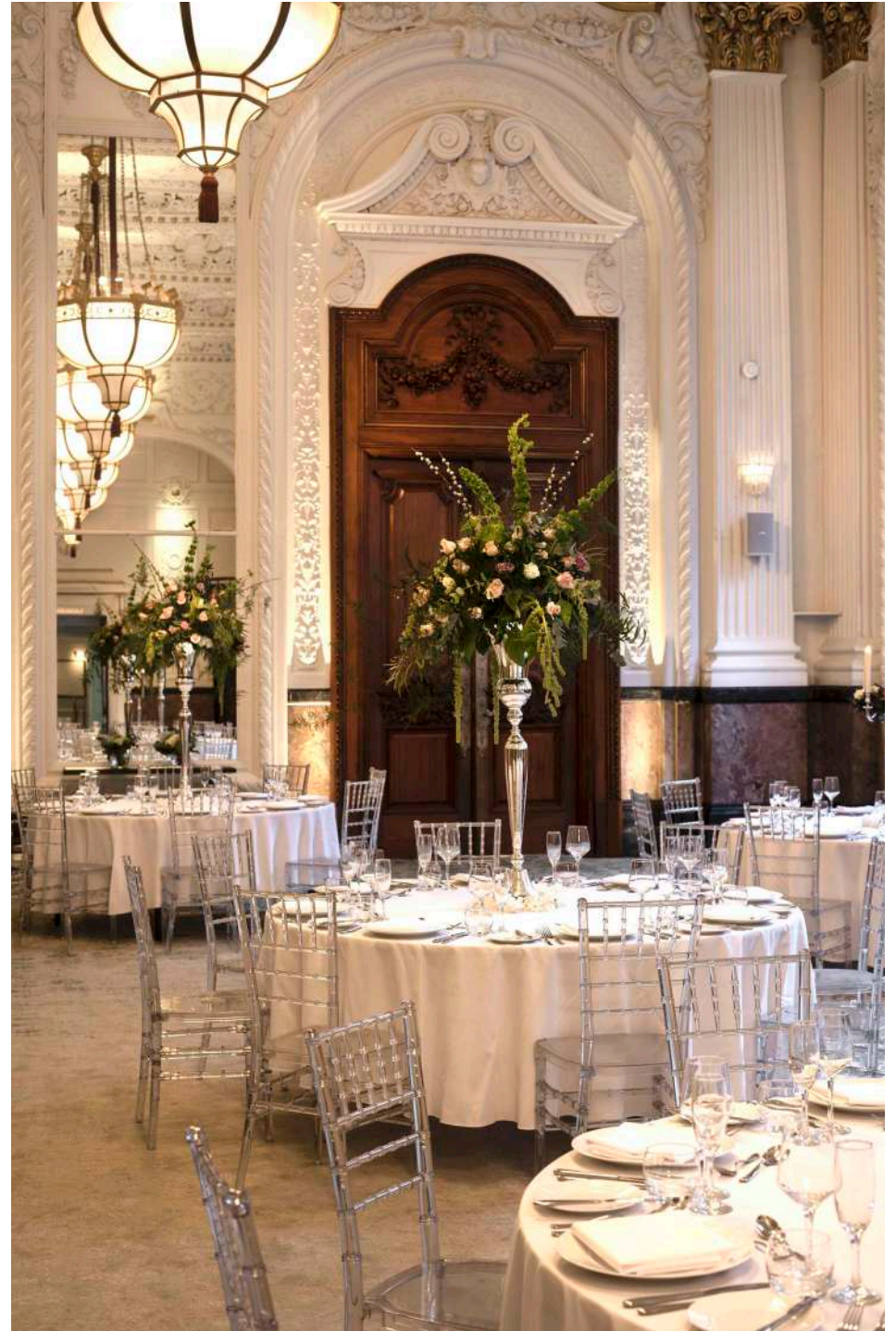
FALL IN LOVE WITH OUR
GRAND BALLROOM: THERE'S
NOWHERE ELSE QUITE LIKE
IT, FOR WEDDINGS AND
PARTIES, CONFERENCES
AND BANQUETING.

Originally known as the Grosvenor Room, the Ballroom was part of the extension to the hotel that opened in 1895, designed by the celebrated Birmingham architects John Henry Chamberlain, William Martin and Frederick Martin. Its elaborate Louis XIV style plasterwork, giant Corinthian columns stretch the full 100ft (30m) of the double-height room, which is illuminated by original Art Deco "electroliers" from the 1920s.

Grand in scale and extraordinary in detail, the Grand Ballroom is a showstopper of a room, and sure to leave a lasting impression.

“INCREDIBLE”

BIRMINGHAM MAIL



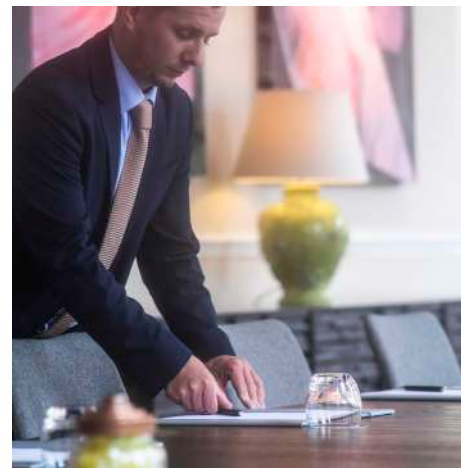




MEETINGS & EVENTS

THE BEST OF OLD AND NEW, OUR NINE ADDITIONAL MEETING ROOMS COMBINE ORIGINAL FEATURES WITH THE LATEST AV AND IT. THERE'S ALSO A GENEROUS BREAK-OUT SPACE, WITH GRAB-AND-GO REFRESHMENTS.

Our team of chefs can cater to every need, from a business breakfast and working lunch to a four-course feast. If you're looking for a show-stopping event space in a city-centre location, there's nowhere quite like The Grand Hotel Birmingham.



- 1 Church
- 2 Shared breakout space
- 3 Horton
- 4 Colmore
- 5 Temple

“BLENDS VICTORIAN GRANDEUR WITH AN ART DECO SHEEN”

DAILY TELEGRAPH (9/10)





AT A GLANCE

185 bedrooms & suites

Duplex penthouse

Grand Ballroom

Meeting & event spaces for 6 to 300

Madeleine cocktail bar

Isaac's New York-style brasserie

Private gym

24-hour room service

Smart HDTVs with Chromecast

Free superfast wi-fi

Nespresso coffee makers

Complimentary tea, coffee, mineral water & milk

Molton Brown 1973 Collection toiletries

Personal safe, iron & ironing board

Birmingham New Street station: 0.3 miles

Snow Hill station: 0.2 miles

Birmingham Airport: 11 miles

Secure, 24/7 parking: B4 Car Park, B4 6DG

Photography by Tom Mannion

Additional photography by Danny Burrows; Tim Cole;
Peter Jackson; Dan Knott; Stefan Paiu; and Paul Raeside

Design by www.thisiscolt.com



THE GRAND HOTEL BIRMINGHAM, COLMORE ROW, BIRMINGHAM B3 2BS
TEL: +44 (0)121 827 9600 E: HELLO@GRANDBIRMINGHAM.CO.UK
THEGRANDHOTELBIRMINGHAM.CO.UK